

S.C. EURO-TOPO S.R.L., jud. COVASNA.
Mun. SF. GHEORGHE, B-dul GEN. GRIGORE BĂLAN, NR. 39, Bl. 28, Sc. E, Ap. 3.
Cod unic de înregistrare: RO 17754637
Mobil: Vodafone-0720547907



DOCUMENTAȚIE TEHNICĂ



**identificarea și delimitarea canalului și digului de apărare din
intr. mun. Sfântu Gheorghe, jud. Covasna în scopul înscrierii în
domeniul public al mun. Sfântu Gheorghe**

Intr. mun. Sfântu Gheorghe

Beneficiar: - mun. Sfântu Gheorghe

Executant: S.C. EURO-TOPO S.R.L., mun. Sf. Gheorghe

Întocmit

**S.C. EURO-TOPO S.R.L. seria RO-B-J nr. 2113
ing. Jakab Sándor seria RO-CV-F nr. 0001**

**JAKAB
SANDOR**

Semnat digital de
JAKAB SANDOR
Data: 2024.04.08
13:35:17 +03'00'

S.C. EURO-TOPO S.R.L.

Mun.SF. GHEORGHE, Str. GROF MIKO IMRE, NR.4, Bl.1, Sc.A, Ap.4,jud.COVASNA.
Cod unic de înregistrare: RO 17754637
Mobil. Orange-0740966607; Vodafone-0720547907



MEMORIU TEHNIC

- 1. Adresa imobilului/zona în care se desfășoară lucrarea:** intr.loc.Sfântu Gheorghe, jud.Covasna.
- 2. Tipul lucrării:** identificarea și delimitarea canalului și digului de apărare din intr.mun.Sfântu Gheorghe, jud.Covasna în scopul înscrierii în domeniul public al mun.Sfântu Gheorghe.
- 3. Suprafața planului supus recepției:** 8113 mp.
- 4. Scurtă prezentare a scopului întocmirii lucrării și/sau a situației tehnice și juridice/istoricului:** identificarea și delimitarea canalului și digului de apărare din intr.mun.Sfântu Gheorghe, jud.Covasna în scopul înscrierii în domeniul public al mun.Sfântu Gheorghe.
- 5. Descrierea generală a operațiunilor efectuate în faza de documentare a lucrării, localizarea și identificarea imobilului, descrierea construcției, etc.:**

Canalul și digul de apărare din intr. loc.Sfântu Gheorghe, jud.Covasna având următoarele vecinătăți: str. Sylvester Lajos la Nord, nr.cad.43139, 43140, 43141, 43142, 43143, 39472, 39473, 39475, 39476 la Est, extravilan la Sud și str. Sylvester Lajos la Vest. Lungimea totală a canalului este de 433 m.

Canalul și digul de apărare din intr. loc.Sfântu Gheorghe, jud.Covasna se identifică pe parcelele cu nr.top 783/2/2/3/2/2-S=231 mp, nr.top 781/2/1/1/2-S=348 mp, nr.top 781/1/1/2/3-S=440 mp, nr.top 780/1/3-S=503 mp, nr.top 779/1/3-S=491 mp, nr.top 778/1/3-S=396 mp, nr.top nou 777/2/1-S=452 mp, nr.top nou 776/2/1-S=342 mp, nr.top nou 775/2/2/1-S=335 mp, nr.top 773/2/4/3-S=150 mp, nr.top nou 772/1/1/3/1-S=885 mp, nr.top 771/1/2-S=309 mp, nr.top nou 771/3/3/1-S=388 mp, nr.top nou 770/2/1-S=303 mp, nr.top nou 769/2/1-S=363 mp, nr.top nou 768/2/1-S=295 mp, nr.top nou 767/2/1-S=332 mp, nr.top nou 766/2/1-S=367 mp, nr.top nou 765/2/1-S=347 mp, nr.top nou 764/2/1-S=836 mp care este identic cu canalul și digul de apărare din intr. loc.Sfântu Gheorghe care se propune înscrierii în domeniul public al mun.Sfântu Gheorghe. Apoi se solicită schimbarea categoriei de folosință și destinație în Cc cu 3577 mp, HR cu 1510 mp și fâneață cu 3026 mp.

6.Operațiuni de specialitate realizate:

Măsurătorile s-au executat cu GPS-RTK-Stonex. Prelucrarea datelor s-a executat în sistem de proiecție "STEREO'70". Legarea la sistem de proiecție Stereo'70 s-a făcut cu GPS-RTK-Stonex folosind baza permanentă NTRIP Nearest_3.1 care face parte din rețea Rompos. Ridicarea s-a executat cu GPS-RTK-Stonex cu ajutorul a 300 puncte radiate, cu ajutorul cărora s-a realizat planul de situație. Executarea calculelor s-a făcut pe PC i5, cu sistemul de programe Autocad LT; TopoSys versiunea 4.4 și MapSys versiunea 5.5 realizat de firma GEOTOP S.R.L - Odorheiu Secuiesc, editat prin printer WorkCentre 5021.

Data întocmirii: Aprilie 2024.

Semnătura și ștampila

S.C. EURO-TOPO S.R.L seria RO-B-J nr.2113
ing.Jakab Sándor seria RO-CV-F nr.0001

JAKAB
SANDOR

Semnat digital de JAKAB
SANDOR
Data: 2024.04.08 13:35:33
+03'00'

MĂSURĂTORI CU GPS-RTK STONEX

JB,NMstr,DT10-13-2023,TM21:46:36
 MO,AD0,UN1,SF1.00000000,EC0,E00.0,AU0
 --SurvCE Version 6.12
 --CRD: Alphanumeric
 --Projection: ROMANIA/Stereographic 1970 TransDatRo Source Code 1:03
 --Equipment: Stonex, S990A, SN:S990312100117, FW:6.0Aa04a,1.13,0.22.211022
 --Antenna Type: [STXS900A NONE],RA0.0780m,SHMP0.0547m,L10.0701m,L20.0608m,--
 Integrated GPS L1/L2+L2C/L5, GLO L1/L2+L
 --Fisierul de localizare: Nici unul
 --Fisierul de separare al geoidului: \Program Files\SurvCE\Data\Romanian_ETRS89v103.gsf
 N43°23'59.0" E019°55'59.0" N48°31'59.0" E030°04'00.0"
 --Grid Adjustment File: Nici unul
 --Scara GPS: 1.00000000
 --Scale Point not used
 --RTK Method: RTCM V3.0, Device: GSM intern, Network: NTRIP Nearest_3.1
 --Entered Rover HR: 2.3000 m, Vertical
 LS,HR2.3701
 GPS,PN1,LA45.511455486240,LN25.473184106400,EL560.448000,--24
 --GS,PN1,N 484117.9647,E 561630.3963,EL520.2849,--24
 --GT,PN1,SW2283,ST456395000,EW2283,ET456395000
 --HSDV:0.005, VSDV:0.007, STATUS:FIXED, SATS:13, AGE:1.0, PDOP:0.893, HDOP:0.500,
 VDOP:0.740, TDOP:0.750, GDOP:0.485, NSDV:0.004, ESDV:0.003
 --DT10-13-2023
 --TM21:46:38
 GPS,PN2,LA45.511458153360,LN25.473162950640,EL560.328000,--24
 --GS,PN2,N 484118.7427,E 561625.8252,EL520.1647,--24
 --GT,PN2,SW2283,ST456410000,EW2283,ET456410000
 --HSDV:0.007, VSDV:0.010, STATUS:FIXED, SATS:11, AGE:1.0, PDOP:0.894, HDOP:0.500,
 VDOP:0.741, TDOP:0.750, GDOP:0.486, NSDV:0.006, ESDV:0.004
 --DT10-13-2023
 --TM21:46:52
 GPS,PN3,LA45.511457339700,LN25.473152718120,EL560.124000,--3
 --GS,PN3,N 484118.4696,E 561623.6208,EL519.9606,--3
 --GT,PN3,SW2283,ST456418000,EW2283,ET456418000
 --HSDV:0.007, VSDV:0.011, STATUS:FIXED, SATS:13, AGE:1.0, PDOP:0.895, HDOP:0.500,
 VDOP:0.742, TDOP:0.751, GDOP:0.486, NSDV:0.006, ESDV:0.004
 --DT10-13-2023
 --TM21:47:00
 GPS,PN4,LA45.511459729020,LN25.473136855740,EL560.003000,--3
 --GS,PN4,N 484119.1732,E 561620.1923,EL519.8395,--3
 --GT,PN4,SW2283,ST456424000,EW2283,ET456424000
 --HSDV:0.011, VSDV:0.013, STATUS:FIXED, SATS:14, AGE:1.0, PDOP:0.912, HDOP:0.500,
 VDOP:0.763, TDOP:0.760, GDOP:0.504, NSDV:0.008, ESDV:0.007
 --DT10-13-2023
 --TM21:47:06
 GPS,PN5,LA45.511462621920,LN25.473125212140,EL560.438000,--22
 --GS,PN5,N 484120.0412,E 561617.6721,EL520.2744,--22
 --GT,PN5,SW2283,ST456434000,EW2283,ET456434000
 --HSDV:0.032, VSDV:0.035, STATUS:FIXED, SATS:10, AGE:1.0, PDOP:0.896, HDOP:0.500,
 VDOP:0.743, TDOP:0.752, GDOP:0.487, NSDV:0.026, ESDV:0.019
 --DT10-13-2023
 --TM21:47:16
 GPS,PN6,LA45.511360827420,LN25.473144279240,EL560.036000,--24
 --GS,PN6,N 484088.6622,E 561622.0963,EL519.8732,--24
 --GT,PN6,SW2283,ST456470000,EW2283,ET456470000
 --HSDV:0.005, VSDV:0.007, STATUS:FIXED, SATS:12, AGE:1.0, PDOP:0.918, HDOP:0.500,
 VDOP:0.770, TDOP:0.772, GDOP:0.497, NSDV:0.004, ESDV:0.003
 --DT10-13-2023
 --TM21:47:52
 GPS,PN7,LA45.511357188840,LN25.473089157600,EL559.552000,--22
 --GS,PN7,N 484087.4211,E 561610.2188,EL519.3887,--22
 --GT,PN7,SW2283,ST456504000,EW2283,ET456504000
 --HSDV:0.008, VSDV:0.011, STATUS:FIXED, SATS:12, AGE:1.0, PDOP:0.920, HDOP:0.500,
 VDOP:0.772, TDOP:0.773, GDOP:0.499, NSDV:0.006, ESDV:0.005
 --DT10-13-2023
 --TM21:48:26
 GPS,PN8,LA45.511337186700,LN25.473082787820,EL559.663000,--12
 --GS,PN8,N 484081.2336,E 561608.9062,EL519.4998,--12
 --GT,PN8,SW2283,ST456514000,EW2283,ET456514000
 --HSDV:0.005, VSDV:0.007, STATUS:FIXED, SATS:13, AGE:1.0, PDOP:0.921, HDOP:0.500,
 VDOP:0.773, TDOP:0.774, GDOP:0.499, NSDV:0.004, ESDV:0.003
 --DT10-13-2023
 --TM21:48:36
 GPS,PN9,LA45.511320268980,LN25.473077561160,EL559.660000,--12
 --GS,PN9,N 484076.0007,E 561607.8307,EL519.4969,--12
 --GT,PN9,SW2283,ST456525000,EW2283,ET456525000
 --HSDV:0.004, VSDV:0.007, STATUS:FIXED, SATS:11, AGE:1.0, PDOP:0.921, HDOP:0.500,
 VDOP:0.773, TDOP:0.774, GDOP:0.499, NSDV:0.003, ESDV:0.003

--DT10-13-2023
--TM21:48:47
GPS,PN10,LA45.511336636680,LN25.473082769040,EL559.624000,--12
--GS,PN10,N 484081.0638,E 561608.9038,EL519.4608,--12
--GT,PN10,SW2283,ST456533000,EW2283,ET456533000
--HSDV:0.005, VSDV:0.007, STATUS:FIXED, SATS:12, AGE:1.0, PDOP:0.921, HDOP:0.500,
VDOP:0.774, TDOP:0.774, GDOP:0.500, NSDV:0.004, ESDV:0.003
--DT10-13-2023
--TM21:48:55
GPS,PN11,LA45.511261807020,LN25.473058376040,EL559.248000,--11
--GS,PN11,N 484057.9148,E 561603.8718,EL519.0851,--11
--GT,PN11,SW2283,ST456633000,EW2283,ET456633000
--HSDV:0.005, VSDV:0.007, STATUS:FIXED, SATS:13, AGE:1.0, PDOP:0.925, HDOP:0.500,
VDOP:0.778, TDOP:0.776, GDOP:0.503, NSDV:0.004, ESDV:0.003
--DT10-13-2023
--TM21:50:35
GPS,PN12,LA45.511261157460,LN25.473059577780,EL559.152000,--11
--GS,PN12,N 484057.7169,E 561604.1330,EL518.9891,--11
--GT,PN12,SW2283,ST456673000,EW2283,ET456673000
--HSDV:0.006, VSDV:0.008, STATUS:FIXED, SATS:13, AGE:1.0, PDOP:0.926, HDOP:0.500,
VDOP:0.780, TDOP:0.777, GDOP:0.505, NSDV:0.005, ESDV:0.004
--DT10-13-2023
--TM21:51:15
GPS,PN13,LA45.511218820980,LN25.473055126200,EL559.102000,--11
--GS,PN13,N 484044.6398,E 561603.3025,EL518.9394,--11
--GT,PN13,SW2283,ST456691000,EW2283,ET456691000
--HSDV:0.008, VSDV:0.011, STATUS:FIXED, SATS:13, AGE:1.0, PDOP:0.953, HDOP:0.500,
VDOP:0.811, TDOP:0.788, GDOP:0.535, NSDV:0.006, ESDV:0.005
--DT10-13-2023
--TM21:51:33
GPS,PN14,LA45.511218878220,LN25.473055863720,EL559.086000,--24
--GS,PN14,N 484044.6590,E 561603.4614,EL518.9234,--24
--GT,PN14,SW2283,ST456713000,EW2283,ET456713000
--HSDV:0.007, VSDV:0.010, STATUS:FIXED, SATS:13, AGE:1.0, PDOP:0.927, HDOP:0.500,
VDOP:0.781, TDOP:0.777, GDOP:0.506, NSDV:0.005, ESDV:0.005
--DT10-13-2023
--TM21:51:55
GPS,PN15,LA45.511192842960,LN25.473054127560,EL559.025000,--12
--GS,PN15,N 484036.6193,E 561603.1667,EL518.8625,--12
--GT,PN15,SW2283,ST456728000,EW2283,ET456728000
--HSDV:0.026, VSDV:0.030, STATUS:FIXED, SATS:9, AGE:1.0, PDOP:0.928, HDOP:0.500,
VDOP:0.782, TDOP:0.778, GDOP:0.506, NSDV:0.021, ESDV:0.016
--DT10-13-2023
--TM21:52:10
GPS,PN16,LA45.511173431880,LN25.473051698220,EL558.993000,--11
--GS,PN16,N 484030.6227,E 561602.7021,EL518.8306,--11
--GT,PN16,SW2283,ST456740000,EW2283,ET456740000
--HSDV:0.009, VSDV:0.013, STATUS:FIXED, SATS:13, AGE:1.0, PDOP:0.946, HDOP:0.500,
VDOP:0.803, TDOP:0.788, GDOP:0.524, NSDV:0.007, ESDV:0.005
--DT10-13-2023
--TM21:52:22
GPS,PN17,LA45.511173653100,LN25.473051437580,EL558.974000,--12
--GS,PN17,N 484030.6904,E 561602.6453,EL518.8116,--12
--GT,PN17,SW2283,ST456745000,EW2283,ET456745000
--HSDV:0.006, VSDV:0.009, STATUS:FIXED, SATS:12, AGE:1.0, PDOP:0.929, HDOP:0.500,
VDOP:0.783, TDOP:0.778, GDOP:0.507, NSDV:0.005, ESDV:0.004
--DT10-13-2023
--TM21:52:27
GPS,PN18,LA45.511153457460,LN25.473050610420,EL559.043000,--24
--GS,PN18,N 484024.4551,E 561602.5287,EL518.8807,--24
--GT,PN18,SW2283,ST456757000,EW2283,ET456757000
--HSDV:0.009, VSDV:0.013, STATUS:FIXED, SATS:11, AGE:1.0, PDOP:0.929, HDOP:0.500,
VDOP:0.783, TDOP:0.778, GDOP:0.507, NSDV:0.007, ESDV:0.006
--DT10-13-2023
--TM21:52:39
GPS,PN19,LA45.511152001740,LN25.473050610480,EL559.136000,--12
--GS,PN19,N 484024.0058,E 561602.5332,EL518.9738,--12
--GT,PN19,SW2283,ST456763000,EW2283,ET456763000
--HSDV:0.006, VSDV:0.008, STATUS:FIXED, SATS:12, AGE:1.0, PDOP:0.929, HDOP:0.500,
VDOP:0.783, TDOP:0.778, GDOP:0.508, NSDV:0.005, ESDV:0.004
--DT10-13-2023
--TM21:52:45
GPS,PN20,LA45.511133770020,LN25.473050160360,EL558.993000,--12
--GS,PN20,N 484018.3774,E 561602.4919,EL518.8309,--12
--GT,PN20,SW2283,ST456771000,EW2283,ET456771000
--HSDV:0.005, VSDV:0.007, STATUS:FIXED, SATS:13, AGE:1.0, PDOP:0.930, HDOP:0.500,
VDOP:0.784, TDOP:0.779, GDOP:0.508, NSDV:0.004, ESDV:0.003
--DT10-13-2023
--TM21:52:53

GPS,PN21,LA45.511133917200,LN25.473050242260,EL559.120000,--11
--GS,PN21,N 484018.4230,E 561602.5091,EL518.9579,--11
--GT,PN21,SW2283,ST456785000,EW2283,ET456785000
--HSDV:0.005, VSDV:0.008, STATUS:FIXED, SATS:13, AGE:1.0, PDOP:0.930, HDOP:0.500,
VDOP:0.784, TDOP:0.779, GDOP:0.508, NSDV:0.004, ESDV:0.003
--DT10-13-2023
--TM21:53:07
GPS,PN22,LA45.511115671320,LN25.473051775140,EL559.068000,--12
--GS,PN22,N 484012.7945,E 561602.8956,EL518.9060,--12
--GT,PN22,SW2283,ST456802000,EW2283,ET456802000
--HSDV:0.005, VSDV:0.007, STATUS:FIXED, SATS:13, AGE:1.0, PDOP:0.931, HDOP:0.500,
VDOP:0.785, TDOP:0.779, GDOP:0.509, NSDV:0.004, ESDV:0.003
--DT10-13-2023
--TM21:53:24
GPS,PN23,LA45.511102381860,LN25.473052157820,EL559.020000,--12
--GS,PN23,N 484008.6934,E 561603.0188,EL518.8581,--12
--GT,PN23,SW2283,ST456810000,EW2283,ET456810000
--HSDV:0.004, VSDV:0.006, STATUS:FIXED, SATS:13, AGE:1.0, PDOP:0.931, HDOP:0.500,
VDOP:0.785, TDOP:0.779, GDOP:0.509, NSDV:0.003, ESDV:0.003
--DT10-13-2023
--TM21:53:32
GPS,PN24,LA45.511038930840,LN25.473049576500,EL558.894000,--22
--GS,PN24,N 483989.1032,E 561602.6564,EL518.7325,--22
--GT,PN24,SW2283,ST456864000,EW2283,ET456864000
--HSDV:0.004, VSDV:0.006, STATUS:FIXED, SATS:13, AGE:1.0, PDOP:0.932, HDOP:0.500,
VDOP:0.787, TDOP:0.780, GDOP:0.511, NSDV:0.003, ESDV:0.003
--DT10-13-2023
--TM21:54:26
GPS,PN25,LA45.511038919440,LN25.473049605480,EL558.885000,--24
--GS,PN25,N 483989.0997,E 561602.6627,EL518.7235,--24
--GT,PN25,SW2283,ST456890000,EW2283,ET456890000
--HSDV:0.004, VSDV:0.006, STATUS:FIXED, SATS:13, AGE:1.0, PDOP:0.933, HDOP:0.500,
VDOP:0.788, TDOP:0.781, GDOP:0.511, NSDV:0.003, ESDV:0.003
--DT10-13-2023
--TM21:54:52
GPS,PN26,LA45.511037580540,LN25.473048696360,EL558.906000,--22
--GS,PN26,N 483988.6845,E 561602.4707,EL518.7445,--22
--GT,PN26,SW2283,ST456900000,EW2283,ET456900000
--HSDV:0.011, VSDV:0.014, STATUS:FIXED, SATS:13, AGE:1.0, PDOP:0.933, HDOP:0.500,
VDOP:0.788, TDOP:0.780, GDOP:0.512, NSDV:0.008, ESDV:0.007
--DT10-13-2023
--TM21:55:02
GPS,PN27,LA45.511033654620,LN25.473052827360,EL559.040000,--3
--GS,PN27,N 483987.4816,E 561603.3737,EL518.8785,--3
--GT,PN27,SW2283,ST456942000,EW2283,ET456942000
--HSDV:0.004, VSDV:0.006, STATUS:FIXED, SATS:13, AGE:1.0, PDOP:0.934, HDOP:0.500,
VDOP:0.789, TDOP:0.781, GDOP:0.513, NSDV:0.003, ESDV:0.003
--DT10-13-2023
--TM21:55:44
GPS,PN28,LA45.511029915060,LN25.473065775840,EL559.054000,--3
--GS,PN28,N 483986.3550,E 561606.1779,EL518.8927,--3
--GT,PN28,SW2283,ST456953000,EW2283,ET456953000
--HSDV:0.005, VSDV:0.007, STATUS:FIXED, SATS:13, AGE:1.0, PDOP:0.935, HDOP:0.500,
VDOP:0.790, TDOP:0.782, GDOP:0.513, NSDV:0.004, ESDV:0.003
--DT10-13-2023
--TM21:55:55
GPS,PN29,LA45.510975190920,LN25.473046482240,EL559.073000,--13
--GS,PN29,N 483969.4226,E 561602.1842,EL518.9119,--13
--GT,PN29,SW2283,ST456967000,EW2283,ET456967000
--HSDV:0.006, VSDV:0.009, STATUS:FIXED, SATS:13, AGE:1.0, PDOP:0.935, HDOP:0.500,
VDOP:0.790, TDOP:0.782, GDOP:0.513, NSDV:0.005, ESDV:0.004
--DT10-13-2023
--TM21:56:09
GPS,PN30,LA45.510960167100,LN25.473045939300,EL558.996000,--13
--GS,PN30,N 483964.7842,E 561602.1130,EL518.8350,--13
--GT,PN30,SW2283,ST456974000,EW2283,ET456974000
--HSDV:0.005, VSDV:0.007, STATUS:FIXED, SATS:13, AGE:1.0, PDOP:0.936, HDOP:0.500,
VDOP:0.791, TDOP:0.782, GDOP:0.514, NSDV:0.004, ESDV:0.003
--DT10-13-2023
--TM21:56:16
GPS,PN31,LA45.510956694360,LN25.473045602580,EL558.850000,--22
--GS,PN31,N 483963.7116,E 561602.0511,EL518.6890,--22
--GT,PN31,SW2283,ST456979000,EW2283,ET456979000
--HSDV:0.004, VSDV:0.006, STATUS:FIXED, SATS:13, AGE:1.0, PDOP:0.936, HDOP:0.500,
VDOP:0.791, TDOP:0.782, GDOP:0.514, NSDV:0.003, ESDV:0.003
--DT10-13-2023
--TM21:56:21
GPS,PN32,LA45.510947083920,LN25.473045517980,EL558.969000,--11
--GS,PN32,N 483960.7451,E 561602.0622,EL518.8080,--11

--GT,PN32,SW2283,ST456988000,EW2283,ET456988000
--HSDV:0.004, VSDV:0.006, STATUS:FIXED, SATS:13, AGE:1.0, PDOP:0.936, HDOP:0.500,
VDOP:0.791, TDOP:0.782, GDOP:0.514, NSDV:0.003, ESDV:0.003
--DT10-13-2023
--TM21:56:30
GPS,PN33,LA45.510946634280,LN25.473045647580,EL558.919000,--13
--GS,PN33,N 483960.6066,E 561602.0916,EL518.7581,--13
--GT,PN33,SW2283,ST456995000,EW2283,ET456995000
--HSDV:0.004, VSDV:0.006, STATUS:FIXED, SATS:13, AGE:1.0, PDOP:0.936, HDOP:0.500,
VDOP:0.791, TDOP:0.782, GDOP:0.514, NSDV:0.003, ESDV:0.002
--DT10-13-2023
--TM21:56:37
GPS,PN34,LA45.510929921220,LN25.473044785020,EL558.831000,--13
--GS,PN34,N 483955.4461,E 561601.9567,EL518.6702,--13
--GT,PN34,SW2283,ST457007000,EW2283,ET457007000
--HSDV:0.015, VSDV:0.021, STATUS:FIXED, SATS:9, AGE:1.0, PDOP:0.960, HDOP:0.500,
VDOP:0.820, TDOP:0.796, GDOP:0.538, NSDV:0.013, ESDV:0.008
--DT10-13-2023
--TM21:56:49
GPS,PN35,LA45.510919458180,LN25.473050456220,EL558.946000,--3
--GS,PN35,N 483952.2287,E 561603.2119,EL518.7853,--3
--GT,PN35,SW2283,ST457019000,EW2283,ET457019000
--HSDV:0.070, VSDV:0.099, STATUS:FIXED, SATS:12, AGE:1.0, PDOP:0.937, HDOP:0.500,
VDOP:0.792, TDOP:0.782, GDOP:0.515, NSDV:0.022, ESDV:0.066
--DT10-13-2023
--TM21:57:01
GPS,PN36,LA45.510918325080,LN25.473062581680,EL559.250000,--3
--GS,PN36,N 483951.9049,E 561605.8307,EL519.0894,--3
--GT,PN36,SW2283,ST457030000,EW2283,ET457030000
--HSDV:0.069, VSDV:0.098, STATUS:FIXED, SATS:13, AGE:1.0, PDOP:0.937, HDOP:0.500,
VDOP:0.792, TDOP:0.782, GDOP:0.515, NSDV:0.056, ESDV:0.041
--DT10-13-2023
--TM21:57:12
GPS,PN37,LA45.510853055280,LN25.473042503760,EL558.803000,--21
--GS,PN37,N 483931.7159,E 561601.7000,EL518.6426,--21
--GT,PN37,SW2283,ST457058000,EW2283,ET457058000
--HSDV:0.004, VSDV:0.007, STATUS:FIXED, SATS:13, AGE:1.0, PDOP:0.937, HDOP:0.500,
VDOP:0.793, TDOP:0.783, GDOP:0.516, NSDV:0.003, ESDV:0.003
--DT10-13-2023
--TM21:57:40
GPS,PN38,LA45.510894637980,LN25.473043557000,EL558.816000,--21
--GS,PN38,N 483944.5530,E 561601.7999,EL518.6554,--21
--GT,PN38,SW2283,ST457072000,EW2283,ET457072000
--HSDV:0.012, VSDV:0.016, STATUS:FIXED, SATS:12, AGE:1.0, PDOP:0.838, HDOP:0.400,
VDOP:0.736, TDOP:0.695, GDOP:0.467, NSDV:0.009, ESDV:0.008
--DT10-13-2023
--TM21:57:54
GPS,PN39,LA45.510858873900,LN25.473048614280,EL558.875000,--3
--GS,PN39,N 483933.5249,E 561603.0002,EL518.7147,--3
--GT,PN39,SW2283,ST457083000,EW2283,ET457083000
--HSDV:0.027, VSDV:0.032, STATUS:FIXED, SATS:14, AGE:1.0, PDOP:0.838, HDOP:0.400,
VDOP:0.736, TDOP:0.695, GDOP:0.467, NSDV:0.022, ESDV:0.015
--DT10-13-2023
--TM21:58:05
GPS,PN40,LA45.510857988720,LN25.473061147620,EL558.902000,--3
--GS,PN40,N 483933.2785,E 561605.7061,EL518.7418,--3
--GT,PN40,SW2283,ST457087000,EW2283,ET457087000
--HSDV:0.013, VSDV:0.017, STATUS:FIXED, SATS:14, AGE:1.0, PDOP:0.838, HDOP:0.400,
VDOP:0.736, TDOP:0.695, GDOP:0.467, NSDV:0.010, ESDV:0.008
--DT10-13-2023
--TM21:58:09
GPS,PN41,LA45.510787513140,LN25.473055434060,EL558.727000,--3
--GS,PN41,N 483911.5133,E 561604.6896,EL518.5672,--3
--GT,PN41,SW2283,ST457103000,EW2283,ET457103000
--HSDV:0.006, VSDV:0.009, STATUS:FIXED, SATS:14, AGE:1.0, PDOP:0.817, HDOP:0.400,
VDOP:0.712, TDOP:0.682, GDOP:0.449, NSDV:0.005, ESDV:0.004
--DT10-13-2023
--TM21:58:25
GPS,PN42,LA45.510787121460,LN25.473042826860,EL558.649000,--3
--GS,PN42,N 483911.3655,E 561601.9716,EL518.4891,--3
--GT,PN42,SW2283,ST457108000,EW2283,ET457108000
--HSDV:0.006, VSDV:0.009, STATUS:FIXED, SATS:14, AGE:1.0, PDOP:0.817, HDOP:0.400,
VDOP:0.712, TDOP:0.682, GDOP:0.449, NSDV:0.005, ESDV:0.004
--DT10-13-2023
--TM21:58:30
GPS,PN43,LA45.510797622720,LN25.473038563260,EL558.574000,--21
--GS,PN43,N 483914.5977,E 561601.0198,EL518.4140,--21
--GT,PN43,SW2283,ST457125000,EW2283,ET457125000
--HSDV:0.005, VSDV:0.007, STATUS:FIXED, SATS:14, AGE:1.0, PDOP:0.818, HDOP:0.400,

VDOP:0.713, TDOP:0.683, GDOP:0.449, NSDV:0.004, ESDV:0.003
--DT10-13-2023
--TM21:58:47
GPS, PN44, LA45.510772789680, LN25.473026184900, EL558.581000, --13
--GS, PN44, N 483906.9062, E 561598.4260, EL518.4210, --13
--GT, PN44, SW2283, ST457141000, EW2283, ET457141000
--HSDV:0.004, VSDV:0.006, STATUS:FIXED, SATS:13, AGE:1.0, PDOP:0.818, HDOP:0.400,
VDOP:0.713, TDOP:0.683, GDOP:0.450, NSDV:0.003, ESDV:0.002
--DT10-13-2023
--TM21:59:03
GPS, PN45, LA45.510788431560, LN25.473026877900, EL558.636000, --11
--GS, PN45, N 483911.7357, E 561598.5276, EL518.4759, --11
--GT, PN45, SW2283, ST457166000, EW2283, ET457166000
--HSDV:0.006, VSDV:0.008, STATUS:FIXED, SATS:14, AGE:1.0, PDOP:0.891, HDOP:0.500,
VDOP:0.738, TDOP:0.758, GDOP:0.469, NSDV:0.004, ESDV:0.004
--DT10-13-2023
--TM21:59:28
GPS, PN46, LA45.510787369800, LN25.473026701080, EL558.625000, --22
--GS, PN46, N 483911.4076, E 561598.4927, EL518.4649, --22
--GT, PN46, SW2283, ST457171000, EW2283, ET457171000
--HSDV:0.006, VSDV:0.008, STATUS:FIXED, SATS:14, AGE:1.0, PDOP:0.891, HDOP:0.500,
VDOP:0.738, TDOP:0.758, GDOP:0.469, NSDV:0.004, ESDV:0.004
--DT10-13-2023
--TM21:59:33
GPS, PN47, LA45.510815031720, LN25.473040112280, EL558.676000, --21
--GS, PN47, N 483919.9744, E 561601.3006, EL518.5159, --21
--GT, PN47, SW2283, ST457207000, EW2283, ET457207000
--HSDV:0.005, VSDV:0.007, STATUS:FIXED, SATS:14, AGE:1.0, PDOP:0.820, HDOP:0.400,
VDOP:0.716, TDOP:0.685, GDOP:0.451, NSDV:0.004, ESDV:0.003
--DT10-13-2023
--TM22:00:09
GPS, PN48, LA45.510755579160, LN25.473024146700, EL558.545000, --13
--GS, PN48, N 483901.5897, E 561598.0391, EL518.3851, --13
--GT, PN48, SW2283, ST457224000, EW2283, ET457224000
--HSDV:0.006, VSDV:0.009, STATUS:FIXED, SATS:12, AGE:1.0, PDOP:0.820, HDOP:0.400,
VDOP:0.716, TDOP:0.684, GDOP:0.452, NSDV:0.005, ESDV:0.004
--DT10-13-2023
--TM22:00:26
GPS, PN49, LA45.510757947240, LN25.472996526300, EL558.470000, --22
--GS, PN49, N 483902.2615, E 561592.0745, EL518.3099, --22
--GT, PN49, SW2283, ST457234000, EW2283, ET457234000
--HSDV:0.005, VSDV:0.007, STATUS:FIXED, SATS:14, AGE:1.0, PDOP:0.820, HDOP:0.400,
VDOP:0.716, TDOP:0.684, GDOP:0.452, NSDV:0.004, ESDV:0.003
--DT10-13-2023
--TM22:00:36
GPS, PN50, LA45.510742384440, LN25.472993701560, EL558.277000, --11
--GS, PN50, N 483897.4519, E 561591.5128, EL518.1169, --11
--GT, PN50, SW2283, ST457244000, EW2283, ET457244000
--HSDV:0.005, VSDV:0.007, STATUS:FIXED, SATS:14, AGE:1.0, PDOP:0.821, HDOP:0.400,
VDOP:0.717, TDOP:0.685, GDOP:0.452, NSDV:0.004, ESDV:0.003
--DT10-13-2023
--TM22:00:46
GPS, PN51, LA45.510747938220, LN25.473004404720, EL558.513000, --99
--GS, PN51, N 483899.1890, E 561593.8044, EL518.3530, --99
--GT, PN51, SW2283, ST457262000, EW2283, ET457262000
--HSDV:0.006, VSDV:0.009, STATUS:FIXED, SATS:14, AGE:3.0, PDOP:0.821, HDOP:0.400,
VDOP:0.717, TDOP:0.685, GDOP:0.453, NSDV:0.005, ESDV:0.004
--DT10-13-2023
--TM22:01:04
GPS, PN52, LA45.510751742640, LN25.473006448140, EL558.711000, --99
--GS, PN52, N 483900.3676, E 561594.2335, EL518.5510, --99
--GT, PN52, SW2283, ST457266000, EW2283, ET457266000
--HSDV:0.005, VSDV:0.008, STATUS:FIXED, SATS:14, AGE:1.0, PDOP:0.821, HDOP:0.400,
VDOP:0.717, TDOP:0.685, GDOP:0.453, NSDV:0.004, ESDV:0.003
--DT10-13-2023
--TM22:01:08
GPS, PN53, LA45.510752523120, LN25.473068959380, EL559.162000, --99
--GS, PN53, N 483900.7423, E 561607.7140, EL519.0025, --99
--GT, PN53, SW2283, ST457280000, EW2283, ET457280000
--HSDV:0.009, VSDV:0.010, STATUS:FIXED, SATS:14, AGE:1.0, PDOP:0.833, HDOP:0.400,
VDOP:0.731, TDOP:0.691, GDOP:0.465, NSDV:0.007, ESDV:0.005
--DT10-13-2023
--TM22:01:22
GPS, PN54, LA45.510742766520, LN25.473028088820, EL558.339000, --11
--GS, PN54, N 483897.6434, E 561598.9286, EL518.1792, --11
--GT, PN54, SW2283, ST457293000, EW2283, ET457293000
--HSDV:0.013, VSDV:0.016, STATUS:FIXED, SATS:14, AGE:1.0, PDOP:0.822, HDOP:0.400,
VDOP:0.718, TDOP:0.685, GDOP:0.454, NSDV:0.011, ESDV:0.006
--DT10-13-2023

--TM22:01:35
GPS,PN55,LA45.510740671080,LN25.473035236740,EL558.347000,--3
--GS,PN55,N 483897.0119,E 561600.4767,EL518.1873,--3
--GT,PN55,SW2283,ST457297000,EW2283,ET457297000
--HSDV:0.006, VSDV:0.008, STATUS:FIXED, SATS:13, AGE:1.0, PDOP:0.822, HDOP:0.400,
VDOP:0.718, TDOP:0.685, GDOP:0.454, NSDV:0.005, ESDV:0.003
--DT10-13-2023
--TM22:01:39
GPS,PN56,LA45.510738470700,LN25.473049813800,EL558.423000,--3
--GS,PN56,N 483896.3639,E 561603.6275,EL518.2634,--3
--GT,PN56,SW2283,ST457302000,EW2283,ET457302000
--HSDV:0.009, VSDV:0.011, STATUS:FIXED, SATS:13, AGE:1.0, PDOP:0.822, HDOP:0.400,
VDOP:0.718, TDOP:0.685, GDOP:0.454, NSDV:0.007, ESDV:0.005
--DT10-13-2023
--TM22:01:44
GPS,PN57,LA45.510726465240,LN25.473026882520,EL558.368000,--22
--GS,PN57,N 483892.6093,E 561598.7183,EL518.2083,--22
--GT,PN57,SW2283,ST457311000,EW2283,ET457311000
--HSDV:0.004, VSDV:0.006, STATUS:FIXED, SATS:14, AGE:1.0, PDOP:0.823, HDOP:0.400,
VDOP:0.719, TDOP:0.686, GDOP:0.454, NSDV:0.003, ESDV:0.003
--DT10-13-2023
--TM22:01:53
GPS,PN58,LA45.510719889540,LN25.473021716520,EL558.412000,--13
--GS,PN58,N 483890.5686,E 561597.6242,EL518.2523,--13
--GT,PN58,SW2283,ST457319000,EW2283,ET457319000
--HSDV:0.004, VSDV:0.006, STATUS:FIXED, SATS:14, AGE:1.0, PDOP:0.823, HDOP:0.400,
VDOP:0.719, TDOP:0.686, GDOP:0.454, NSDV:0.003, ESDV:0.003
--DT10-13-2023
--TM22:02:01
GPS,PN59,LA45.510702541980,LN25.473020481600,EL558.423000,--13
--GS,PN59,N 483885.2114,E 561597.4109,EL518.2634,--13
--GT,PN59,SW2283,ST457327000,EW2283,ET457327000
--HSDV:0.004, VSDV:0.006, STATUS:FIXED, SATS:14, AGE:1.0, PDOP:0.823, HDOP:0.400,
VDOP:0.719, TDOP:0.686, GDOP:0.454, NSDV:0.003, ESDV:0.003
--DT10-13-2023
--TM22:02:09
GPS,PN60,LA45.510695564880,LN25.473024298500,EL558.287000,--22
--GS,PN60,N 483883.0661,E 561598.2556,EL518.1275,--22
--GT,PN60,SW2283,ST457334000,EW2283,ET457334000
--HSDV:0.004, VSDV:0.006, STATUS:FIXED, SATS:14, AGE:1.0, PDOP:0.823, HDOP:0.400,
VDOP:0.719, TDOP:0.686, GDOP:0.455, NSDV:0.003, ESDV:0.003
--DT10-13-2023
--TM22:02:16
GPS,PN61,LA45.510656671440,LN25.473046093020,EL558.356000,--3
--GS,PN61,N 483871.1079,E 561603.0755,EL518.1969,--3
--GT,PN61,SW2283,ST457347000,EW2283,ET457347000
--HSDV:0.004, VSDV:0.006, STATUS:FIXED, SATS:14, AGE:1.0, PDOP:0.824, HDOP:0.400,
VDOP:0.720, TDOP:0.687, GDOP:0.455, NSDV:0.003, ESDV:0.003
--DT10-13-2023
--TM22:02:29
GPS,PN62,LA45.510655973400,LN25.473029613180,EL558.293000,--3
--GS,PN62,N 483870.8572,E 561599.5231,EL518.1338,--3
--GT,PN62,SW2283,ST457352000,EW2283,ET457352000
--HSDV:0.005, VSDV:0.007, STATUS:FIXED, SATS:14, AGE:1.0, PDOP:0.824, HDOP:0.400,
VDOP:0.720, TDOP:0.687, GDOP:0.455, NSDV:0.004, ESDV:0.003
--DT10-13-2023
--TM22:02:34
GPS,PN63,LA45.510654321780,LN25.473021396000,EL558.098000,--11
--GS,PN63,N 483870.3298,E 561597.7558,EL517.9387,--11
--GT,PN63,SW2283,ST457357000,EW2283,ET457357000
--HSDV:0.005, VSDV:0.008, STATUS:FIXED, SATS:14, AGE:1.0, PDOP:0.824, HDOP:0.400,
VDOP:0.720, TDOP:0.687, GDOP:0.455, NSDV:0.004, ESDV:0.003
--DT10-13-2023
--TM22:02:39
GPS,PN64,LA45.510653869740,LN25.473019610100,EL558.135000,--13
--GS,PN64,N 483870.1864,E 561597.3720,EL517.9757,--13
--GT,PN64,SW2283,ST457364000,EW2283,ET457364000
--HSDV:0.004, VSDV:0.006, STATUS:FIXED, SATS:14, AGE:1.0, PDOP:0.895, HDOP:0.500,
VDOP:0.742, TDOP:0.759, GDOP:0.473, NSDV:0.003, ESDV:0.003
--DT10-13-2023
--TM22:02:46
GPS,PN65,LA45.510641393940,LN25.473020093700,EL558.426000,--13
--GS,PN65,N 483866.3367,E 561597.5145,EL518.2668,--13
--GT,PN65,SW2283,ST457371000,EW2283,ET457371000
--HSDV:0.005, VSDV:0.007, STATUS:FIXED, SATS:14, AGE:1.0, PDOP:0.824, HDOP:0.400,
VDOP:0.720, TDOP:0.687, GDOP:0.455, NSDV:0.004, ESDV:0.003
--DT10-13-2023
--TM22:02:53
GPS,PN66,LA45.510641625960,LN25.473021669240,EL558.458000,--24

--GS,PN66,N 483866.4117,E 561597.8536,EL518.2988,--24
--GT,PN66,SW2283,ST457387000,EW2283,ET457387000
--HSDV:0.004, VSDV:0.006, STATUS:FIXED, SATS:14, AGE:1.0, PDOP:0.825, HDOP:0.400,
VDOP:0.721, TDOP:0.687, GDOP:0.456, NSDV:0.003, ESDV:0.002
--DT10-13-2023
--TM22:03:09
GPS,PN67,LA45.510641485800,LN25.473020603100,EL558.377000,--11
--GS,PN67,N 483866.3662,E 561597.6241,EL518.2178,--11
--GT,PN67,SW2283,ST457392000,EW2283,ET457392000
--HSDV:0.004, VSDV:0.006, STATUS:FIXED, SATS:14, AGE:1.0, PDOP:0.825, HDOP:0.400,
VDOP:0.721, TDOP:0.687, GDOP:0.456, NSDV:0.003, ESDV:0.003
--DT10-13-2023
--TM22:03:14
GPS,PN68,LA45.510608572320,LN25.473019660920,EL558.407000,--12
--GS,PN68,N 483856.2051,E 561597.5216,EL518.2480,--12
--GT,PN68,SW2283,ST457413000,EW2283,ET457413000
--HSDV:0.004, VSDV:0.006, STATUS:FIXED, SATS:14, AGE:1.0, PDOP:0.825, HDOP:0.400,
VDOP:0.721, TDOP:0.687, GDOP:0.456, NSDV:0.003, ESDV:0.003
--DT10-13-2023
--TM22:03:35
GPS,PN69,LA45.510594058500,LN25.473019025280,EL558.389000,--12
--GS,PN69,N 483851.7239,E 561597.4290,EL518.2301,--12
--GT,PN69,SW2283,ST457421000,EW2283,ET457421000
--HSDV:0.004, VSDV:0.006, STATUS:FIXED, SATS:14, AGE:1.0, PDOP:0.825, HDOP:0.400,
VDOP:0.722, TDOP:0.688, GDOP:0.456, NSDV:0.003, ESDV:0.003
--DT10-13-2023
--TM22:03:43
GPS,PN70,LA45.510550541820,LN25.473040768140,EL558.427000,--3
--GS,PN70,N 483838.3386,E 561602.2519,EL518.2686,--3
--GT,PN70,SW2283,ST457434000,EW2283,ET457434000
--HSDV:0.012, VSDV:0.016, STATUS:FIXED, SATS:10, AGE:1.0, PDOP:0.932, HDOP:0.500,
VDOP:0.787, TDOP:0.778, GDOP:0.514, NSDV:0.010, ESDV:0.006
--DT10-13-2023
--TM22:03:56
GPS,PN71,LA45.510549731940,LN25.473024742500,EL558.398000,--3
--GS,PN71,N 483838.0544,E 561598.7978,EL518.2394,--3
--GT,PN71,SW2283,ST457439000,EW2283,ET457439000
--HSDV:0.011, VSDV:0.017, STATUS:FIXED, SATS:12, AGE:1.0, PDOP:0.830, HDOP:0.400,
VDOP:0.727, TDOP:0.689, GDOP:0.463, NSDV:0.009, ESDV:0.006
--DT10-13-2023
--TM22:04:01
GPS,PN72,LA45.510563563680,LN25.473018014160,EL558.353000,--24
--GS,PN72,N 483842.3092,E 561597.3042,EL518.1943,--24
--GT,PN72,SW2283,ST457448000,EW2283,ET457448000
--HSDV:0.008, VSDV:0.012, STATUS:FIXED, SATS:13, AGE:1.0, PDOP:0.825, HDOP:0.400,
VDOP:0.722, TDOP:0.687, GDOP:0.457, NSDV:0.007, ESDV:0.004
--DT10-13-2023
--TM22:04:10
GPS,PN73,LA45.510548571600,LN25.473017464860,EL558.353000,--11
--GS,PN73,N 483837.6806,E 561597.2317,EL518.1944,--11
--GT,PN73,SW2283,ST457457000,EW2283,ET457457000
--HSDV:0.006, VSDV:0.009, STATUS:FIXED, SATS:13, AGE:1.0, PDOP:0.825, HDOP:0.400,
VDOP:0.722, TDOP:0.687, GDOP:0.457, NSDV:0.005, ESDV:0.003
--DT10-13-2023
--TM22:04:19
GPS,PN74,LA45.510539990460,LN25.473017236620,EL558.308000,--24
--GS,PN74,N 483835.0315,E 561597.2087,EL518.1494,--24
--GT,PN74,SW2283,ST457465000,EW2283,ET457465000
--HSDV:0.009, VSDV:0.012, STATUS:FIXED, SATS:13, AGE:1.0, PDOP:0.826, HDOP:0.400,
VDOP:0.723, TDOP:0.688, GDOP:0.457, NSDV:0.007, ESDV:0.005
--DT10-13-2023
--TM22:04:27
GPS,PN75,LA45.510538324680,LN25.473017317140,EL558.283000,--12
--GS,PN75,N 483834.5175,E 561597.2312,EL518.1245,--12
--GT,PN75,SW2283,ST457471000,EW2283,ET457471000
--HSDV:0.005, VSDV:0.008, STATUS:FIXED, SATS:14, AGE:1.0, PDOP:0.826, HDOP:0.400,
VDOP:0.723, TDOP:0.688, GDOP:0.457, NSDV:0.004, ESDV:0.003
--DT10-13-2023
--TM22:04:33
GPS,PN76,LA45.510521256240,LN25.473016390500,EL558.349000,--12
--GS,PN76,N 483829.2472,E 561597.0836,EL518.1906,--12
--GT,PN76,SW2283,ST457479000,EW2283,ET457479000
--HSDV:0.006, VSDV:0.009, STATUS:FIXED, SATS:13, AGE:1.0, PDOP:0.826, HDOP:0.400,
VDOP:0.723, TDOP:0.688, GDOP:0.458, NSDV:0.005, ESDV:0.003
--DT10-13-2023
--TM22:04:41
GPS,PN77,LA45.510510957720,LN25.473015859680,EL558.268000,--11
--GS,PN77,N 483826.0673,E 561597.0006,EL518.1096,--11
--GT,PN77,SW2283,ST457489000,EW2283,ET457489000

--HSDV:0.010, VSDV:0.014, STATUS:FIXED, SATS:13, AGE:1.0, PDOP:0.826, HDOP:0.400,
VDOP:0.723, TDOP:0.688, GDOP:0.458, NSDV:0.008, ESDV:0.006
--DT10-13-2023
--TM22:04:51
GPS, PN78, LA45.510496702320, LN25.473018281520, EL558.191000, --100
--GS, PN78, N 483821.6725, E 561597.5666, EL518.0327, --100
--GT, PN78, SW2283, ST457501000, EW2283, ET457501000
--HSDV:0.006, VSDV:0.009, STATUS:FIXED, SATS:14, AGE:1.0, PDOP:0.826, HDOP:0.400,
VDOP:0.723, TDOP:0.688, GDOP:0.458, NSDV:0.005, ESDV:0.004
--DT10-13-2023
--TM22:05:03
GPS, PN79, LA45.510484258140, LN25.473015599400, EL558.215000, --11
--GS, PN79, N 483817.8257, E 561597.0262, EL518.0568, --11
--GT, PN79, SW2283, ST457510000, EW2283, ET457510000
--HSDV:0.005, VSDV:0.008, STATUS:FIXED, SATS:14, AGE:1.0, PDOP:0.826, HDOP:0.400,
VDOP:0.723, TDOP:0.688, GDOP:0.458, NSDV:0.004, ESDV:0.003
--DT10-13-2023
--TM22:05:12
GPS, PN80, LA45.510466407480, LN25.473015215040, EL558.347000, --22
--GS, PN80, N 483812.3151, E 561596.9979, EL518.1889, --22
--GT, PN80, SW2283, ST457522000, EW2283, ET457522000
--HSDV:0.005, VSDV:0.007, STATUS:FIXED, SATS:14, AGE:1.0, PDOP:0.827, HDOP:0.400,
VDOP:0.724, TDOP:0.689, GDOP:0.458, NSDV:0.004, ESDV:0.003
--DT10-13-2023
--TM22:05:24
GPS, PN81, LA45.510449637900, LN25.473040643520, EL558.283000, --3
--GS, PN81, N 483807.1934, E 561602.5340, EL518.1252, --3
--GT, PN81, SW2283, ST457532000, EW2283, ET457532000
--HSDV:0.004, VSDV:0.006, STATUS:FIXED, SATS:12, AGE:1.0, PDOP:0.911, HDOP:0.500,
VDOP:0.761, TDOP:0.768, GDOP:0.489, NSDV:0.003, ESDV:0.003
--DT10-13-2023
--TM22:05:34
GPS, PN82, LA45.510449946660, LN25.473024792540, EL558.305000, --3
--GS, PN82, N 483807.2548, E 561599.1141, EL518.1471, --3
--GT, PN82, SW2283, ST457537000, EW2283, ET457537000
--HSDV:0.008, VSDV:0.012, STATUS:FIXED, SATS:11, AGE:1.0, PDOP:0.911, HDOP:0.500,
VDOP:0.761, TDOP:0.768, GDOP:0.489, NSDV:0.006, ESDV:0.005
--DT10-13-2023
--TM22:05:39
GPS, PN83, LA45.510445734960, LN25.473015573180, EL558.314000, --13
--GS, PN83, N 483805.9351, E 561597.1385, EL518.1560, --13
--GT, PN83, SW2283, ST457545000, EW2283, ET457545000
--HSDV:0.004, VSDV:0.006, STATUS:FIXED, SATS:11, AGE:1.0, PDOP:0.921, HDOP:0.500,
VDOP:0.774, TDOP:0.773, GDOP:0.502, NSDV:0.003, ESDV:0.002
--DT10-13-2023
--TM22:05:47
GPS, PN84, LA45.510433820880, LN25.473006434220, EL558.248000, --13
--GS, PN84, N 483802.2382, E 561595.2038, EL518.0900, --13
--GT, PN84, SW2283, ST457555000, EW2283, ET457555000
--HSDV:0.004, VSDV:0.006, STATUS:FIXED, SATS:11, AGE:1.0, PDOP:0.921, HDOP:0.500,
VDOP:0.774, TDOP:0.773, GDOP:0.502, NSDV:0.003, ESDV:0.002
--DT10-13-2023
--TM22:05:57
GPS, PN85, LA45.510426663000, LN25.472968645320, EL558.056000, --11
--GS, PN85, N 483799.9480, E 561587.0749, EL517.8978, --11
--GT, PN85, SW2283, ST457566000, EW2283, ET457566000
--HSDV:0.005, VSDV:0.008, STATUS:FIXED, SATS:13, AGE:1.0, PDOP:0.911, HDOP:0.500,
VDOP:0.762, TDOP:0.768, GDOP:0.490, NSDV:0.004, ESDV:0.003
--DT10-13-2023
--TM22:06:08
GPS, PN86, LA45.510413404680, LN25.472973861480, EL558.155000, --11
--GS, PN86, N 483795.8668, E 561588.2406, EL517.9969, --11
--GT, PN86, SW2283, ST457573000, EW2283, ET457573000
--HSDV:0.006, VSDV:0.009, STATUS:FIXED, SATS:13, AGE:1.0, PDOP:0.912, HDOP:0.500,
VDOP:0.763, TDOP:0.769, GDOP:0.490, NSDV:0.005, ESDV:0.004
--DT10-13-2023
--TM22:06:15
GPS, PN87, LA45.510417721620, LN25.472997875280, EL558.191000, --24
--GS, PN87, N 483797.2507, E 561593.4070, EL518.0331, --24
--GT, PN87, SW2283, ST457581000, EW2283, ET457581000
--HSDV:0.006, VSDV:0.010, STATUS:FIXED, SATS:13, AGE:1.0, PDOP:0.912, HDOP:0.500,
VDOP:0.763, TDOP:0.769, GDOP:0.491, NSDV:0.005, ESDV:0.004
--DT10-13-2023
--TM22:06:23
GPS, PN88, LA45.510420721740, LN25.473015097560, EL558.277000, --11
--GS, PN88, N 483798.2135, E 561597.1125, EL518.1192, --11
--GT, PN88, SW2283, ST457590000, EW2283, ET457590000
--HSDV:0.004, VSDV:0.006, STATUS:FIXED, SATS:13, AGE:1.0, PDOP:0.912, HDOP:0.500,
VDOP:0.763, TDOP:0.769, GDOP:0.491, NSDV:0.003, ESDV:0.003

--DT10-13-2023
--TM22:06:32
--Entered Rover HR: 2.1000 m, Vertical
LS,HR2.1701
GPS,PN89,LA45.510406905660,LN25.473015238980,EL558.015000,--12
--GS,PN89,N 483793.9494,E 561597.1853,EL518.0573,--12
--GT,PN89,SW2283,ST457631000,EW2283,ET457631000
--HSDV:0.005, VSDV:0.007, STATUS:FIXED, SATS:13, AGE:1.0, PDOP:0.914, HDOP:0.500,
VDOP:0.765, TDOP:0.770, GDOP:0.492, NSDV:0.004, ESDV:0.003
--DT10-13-2023
--TM22:07:13
GPS,PN90,LA45.510402057720,LN25.473015428580,EL558.083000,--12
--GS,PN90,N 483792.4534,E 561597.2410,EL518.1253,--12
--GT,PN90,SW2283,ST457639000,EW2283,ET457639000
--HSDV:0.005, VSDV:0.007, STATUS:FIXED, SATS:13, AGE:1.0, PDOP:0.914, HDOP:0.500,
VDOP:0.765, TDOP:0.770, GDOP:0.493, NSDV:0.004, ESDV:0.003
--DT10-13-2023
--TM22:07:21
GPS,PN91,LA45.510390823740,LN25.473015163740,EL558.006000,--24
--GS,PN91,N 483788.9854,E 561597.2183,EL518.0484,--24
--GT,PN91,SW2283,ST457647000,EW2283,ET457647000
--HSDV:0.005, VSDV:0.007, STATUS:FIXED, SATS:13, AGE:1.0, PDOP:0.915, HDOP:0.500,
VDOP:0.766, TDOP:0.771, GDOP:0.493, NSDV:0.004, ESDV:0.003
--DT10-13-2023
--TM22:07:29
GPS,PN92,LA45.510377485440,LN25.473014908800,EL557.959000,--11
--GS,PN92,N 483784.8679,E 561597.2041,EL518.0015,--11
--GT,PN92,SW2283,ST457663000,EW2283,ET457663000
--HSDV:0.007, VSDV:0.011, STATUS:FIXED, SATS:12, AGE:1.0, PDOP:0.915, HDOP:0.500,
VDOP:0.766, TDOP:0.771, GDOP:0.493, NSDV:0.006, ESDV:0.004
--DT10-13-2023
--TM22:07:45
GPS,PN93,LA45.510371807700,LN25.473013727340,EL557.918000,--23
--GS,PN93,N 483783.1129,E 561596.9667,EL517.9605,--23
--GT,PN93,SW2283,ST457681000,EW2283,ET457681000
--HSDV:0.010, VSDV:0.015, STATUS:FIXED, SATS:10, AGE:1.0, PDOP:0.924, HDOP:0.500,
VDOP:0.777, TDOP:0.772, GDOP:0.507, NSDV:0.008, ESDV:0.006
--DT10-13-2023
--TM22:08:03
GPS,PN94,LA45.510369535320,LN25.473013155480,EL557.850000,--13
--GS,PN94,N 483782.4102,E 561596.8503,EL517.8925,--13
--GT,PN94,SW2283,ST457693000,EW2283,ET457693000
--HSDV:0.009, VSDV:0.013, STATUS:FIXED, SATS:10, AGE:1.0, PDOP:1.039, HDOP:0.500,
VDOP:0.911, TDOP:0.824, GDOP:0.633, NSDV:0.007, ESDV:0.005
--DT10-13-2023
--TM22:08:15
GPS,PN95,LA45.510357006780,LN25.473013157640,EL557.852000,--13
--GS,PN95,N 483778.5432,E 561596.8891,EL517.8946,--13
--GT,PN95,SW2283,ST457700000,EW2283,ET457700000
--HSDV:0.006, VSDV:0.009, STATUS:FIXED, SATS:11, AGE:1.0, PDOP:0.962, HDOP:0.500,
VDOP:0.822, TDOP:0.795, GDOP:0.542, NSDV:0.005, ESDV:0.004
--DT10-13-2023
--TM22:08:22
GPS,PN96,LA45.510353155260,LN25.473014791560,EL557.928000,--23
--GS,PN96,N 483777.3579,E 561597.2533,EL517.9706,--23
--GT,PN96,SW2283,ST457709000,EW2283,ET457709000
--HSDV:0.006, VSDV:0.010, STATUS:FIXED, SATS:13, AGE:1.0, PDOP:0.916, HDOP:0.500,
VDOP:0.768, TDOP:0.771, GDOP:0.495, NSDV:0.005, ESDV:0.004
--DT10-13-2023
--TM22:08:31
GPS,PN97,LA45.510347504700,LN25.473017248680,EL558.003000,--11
--GS,PN97,N 483775.6190,E 561597.8006,EL518.0457,--11
--GT,PN97,SW2283,ST457722000,EW2283,ET457722000
--HSDV:0.007, VSDV:0.011, STATUS:FIXED, SATS:13, AGE:1.0, PDOP:0.917, HDOP:0.500,
VDOP:0.769, TDOP:0.772, GDOP:0.495, NSDV:0.006, ESDV:0.004
--DT10-13-2023
--TM22:08:44
GPS,PN98,LA45.510347226960,LN25.473017246460,EL558.007000,--12
--GS,PN98,N 483775.5333,E 561597.8010,EL518.0497,--12
--GT,PN98,SW2283,ST457730000,EW2283,ET457730000
--HSDV:0.008, VSDV:0.011, STATUS:FIXED, SATS:13, AGE:1.0, PDOP:0.917, HDOP:0.500,
VDOP:0.769, TDOP:0.772, GDOP:0.495, NSDV:0.006, ESDV:0.005
--DT10-13-2023
--TM22:08:52
GPS,PN99,LA45.510335910300,LN25.473016467480,EL558.149000,--12
--GS,PN99,N 483772.0387,E 561597.6676,EL518.1918,--12
--GT,PN99,SW2283,ST457743000,EW2283,ET457743000
--HSDV:0.029, VSDV:0.053, STATUS:FIXED, SATS:9, AGE:1.0, PDOP:0.978, HDOP:0.500,
VDOP:0.841, TDOP:0.804, GDOP:0.557, NSDV:0.025, ESDV:0.015

--DT10-13-2023
--TM22:09:05
GPS, PN100, LA45.510316726620, LN25.473038274420, EL558.051000, --3
--GS, PN100, N 483766.1641, E 561602.4299, EL518.0941, --3
--GT, PN100, SW2283, ST457765000, EW2283, ET457765000
--HSDV:0.023, VSDV:0.035, STATUS:FIXED, SATS:11, AGE:1.0, PDOP:0.942, HDOP:0.500,
VDOP:0.798, TDOP:0.781, GDOP:0.526, NSDV:0.018, ESDV:0.014
--DT10-13-2023
--TM22:09:27
GPS, PN101, LA45.510316617420, LN25.473022887180, EL558.047000, --3
--GS, PN101, N 483766.0975, E 561599.1113, EL518.0899, --3
--GT, PN101, SW2283, ST457773000, EW2283, ET457773000
--HSDV:0.022, VSDV:0.037, STATUS:FIXED, SATS:11, AGE:1.0, PDOP:0.958, HDOP:0.500,
VDOP:0.817, TDOP:0.790, GDOP:0.541, NSDV:0.017, ESDV:0.014
--DT10-13-2023
--TM22:09:35
GPS, PN102, LA45.510324442380, LN25.473015919560, EL558.138000, --24
--GS, PN102, N 483768.4978, E 561597.5845, EL518.1808, --24
--GT, PN102, SW2283, ST457785000, EW2283, ET457785000
--HSDV:0.069, VSDV:0.052, STATUS:FIXED, SATS:5, AGE:1.0, PDOP:1.049, HDOP:0.500,
VDOP:0.922, TDOP:0.851, GDOP:0.613, NSDV:0.050, ESDV:0.047
--DT10-13-2023
--TM22:09:47
GPS, PN103, LA45.510317995140, LN25.473016495020, EL558.005000, --11
--GS, PN103, N 483766.5090, E 561597.7284, EL518.0479, --11
--GT, PN103, SW2283, ST457793000, EW2283, ET457793000
--HSDV:0.086, VSDV:0.078, STATUS:FIXED, SATS:7, AGE:1.0, PDOP:1.049, HDOP:0.500,
VDOP:0.922, TDOP:0.850, GDOP:0.614, NSDV:0.061, ESDV:0.061
--DT10-13-2023
--TM22:09:55
GPS, PN104, LA45.510317318820, LN25.473014672220, EL557.825000, --24
--GS, PN104, N 483766.2964, E 561597.3373, EL517.8679, --24
--GT, PN104, SW2283, ST457805000, EW2283, ET457805000
--HSDV:0.045, VSDV:0.050, STATUS:FIXED, SATS:9, AGE:1.0, PDOP:1.002, HDOP:0.500,
VDOP:0.868, TDOP:0.812, GDOP:0.587, NSDV:0.035, ESDV:0.028
--DT10-13-2023
--TM22:10:07
GPS, PN105, LA45.510314934300, LN25.473014598900, EL557.883000, --24
--GS, PN105, N 483765.5602, E 561597.3288, EL517.9259, --24
--GT, PN105, SW2283, ST457810000, EW2283, ET457810000
--HSDV:0.027, VSDV:0.032, STATUS:FIXED, SATS:10, AGE:1.0, PDOP:1.002, HDOP:0.500,
VDOP:0.868, TDOP:0.812, GDOP:0.587, NSDV:0.021, ESDV:0.017
--DT10-13-2023
--TM22:10:12
GPS, PN106, LA45.510296515440, LN25.473014085780, EL557.820000, --24
--GS, PN106, N 483759.8740, E 561597.2745, EL517.8630, --24
--GT, PN106, SW2283, ST457827000, EW2283, ET457827000
--HSDV:0.006, VSDV:0.008, STATUS:FIXED, SATS:13, AGE:1.0, PDOP:0.943, HDOP:0.500,
VDOP:0.800, TDOP:0.782, GDOP:0.527, NSDV:0.005, ESDV:0.004
--DT10-13-2023
--TM22:10:29
GPS, PN107, LA45.510291739080, LN25.473013780500, EL557.842000, --13
--GS, PN107, N 483758.3991, E 561597.2233, EL517.8850, --13
--GT, PN107, SW2283, ST457838000, EW2283, ET457838000
--HSDV:0.006, VSDV:0.008, STATUS:FIXED, SATS:14, AGE:1.0, PDOP:0.926, HDOP:0.500,
VDOP:0.780, TDOP:0.772, GDOP:0.512, NSDV:0.004, ESDV:0.004
--DT10-13-2023
--TM22:10:40
GPS, PN108, LA45.510279001020, LN25.473014469540, EL557.797000, --13
--GS, PN108, N 483754.4688, E 561597.4109, EL517.8401, --13
--GT, PN108, SW2283, ST457845000, EW2283, ET457845000
--HSDV:0.005, VSDV:0.007, STATUS:FIXED, SATS:14, AGE:1.0, PDOP:0.926, HDOP:0.500,
VDOP:0.780, TDOP:0.772, GDOP:0.512, NSDV:0.004, ESDV:0.003
--DT10-13-2023
--TM22:10:47
GPS, PN109, LA45.510278354100, LN25.473014921340, EL557.844000, --24
--GS, PN109, N 483754.2701, E 561597.5103, EL517.8871, --24
--GT, PN109, SW2283, ST457858000, EW2283, ET457858000
--HSDV:0.005, VSDV:0.008, STATUS:FIXED, SATS:14, AGE:1.0, PDOP:0.927, HDOP:0.500,
VDOP:0.781, TDOP:0.773, GDOP:0.512, NSDV:0.004, ESDV:0.003
--DT10-13-2023
--TM22:11:00
GPS, PN110, LA45.510277962660, LN25.473014965860, EL557.844000, --11
--GS, PN110, N 483754.1494, E 561597.5211, EL517.8871, --11
--GT, PN110, SW2283, ST457881000, EW2283, ET457881000
--HSDV:0.005, VSDV:0.008, STATUS:FIXED, SATS:14, AGE:1.0, PDOP:0.927, HDOP:0.500,
VDOP:0.781, TDOP:0.773, GDOP:0.513, NSDV:0.004, ESDV:0.003
--DT10-13-2023
--TM22:11:23

GPS,PN111,LA45.510270955260,LN25.473014954700,EL557.848000,--24
--GS,PN111,N 483751.9865,E 561597.5402,EL517.8912,--24
--GT,PN111,SW2283,ST457889000,EW2283,ET457889000
--HSDV:0.008, VSDV:0.013, STATUS:FIXED, SATS:14, AGE:1.0, PDOP:0.928, HDOP:0.500,
VDOP:0.782, TDOP:0.774, GDOP:0.513, NSDV:0.006, ESDV:0.006
--DT10-13-2023
--TM22:11:31
GPS,PN112,LA45.510268524480,LN25.473011513400,EL557.799000,--13
--GS,PN112,N 483751.2288,E 561596.8053,EL517.8421,--13
--GT,PN112,SW2283,ST457898000,EW2283,ET457898000
--HSDV:0.006, VSDV:0.009, STATUS:FIXED, SATS:14, AGE:1.0, PDOP:0.928, HDOP:0.500,
VDOP:0.782, TDOP:0.774, GDOP:0.513, NSDV:0.004, ESDV:0.004
--DT10-13-2023
--TM22:11:40
GPS,PN113,LA45.510251059080,LN25.473011141820,EL557.801000,--13
--GS,PN113,N 483745.8372,E 561596.7787,EL517.8443,--13
--GT,PN113,SW2283,ST457907000,EW2283,ET457907000
--HSDV:0.005, VSDV:0.007, STATUS:FIXED, SATS:14, AGE:1.0, PDOP:0.928, HDOP:0.500,
VDOP:0.782, TDOP:0.774, GDOP:0.513, NSDV:0.004, ESDV:0.003
--DT10-13-2023
--TM22:11:49
GPS,PN114,LA45.510248876460,LN25.473014995200,EL557.840000,--11
--GS,PN114,N 483745.1717,E 561597.6165,EL517.8833,--11
--GT,PN114,SW2283,ST457927000,EW2283,ET457927000
--HSDV:0.004, VSDV:0.007, STATUS:FIXED, SATS:13, AGE:1.0, PDOP:0.929, HDOP:0.500,
VDOP:0.783, TDOP:0.774, GDOP:0.514, NSDV:0.003, ESDV:0.003
--DT10-13-2023
--TM22:12:09
GPS,PN115,LA45.510239732220,LN25.473015877440,EL557.747000,--11
--GS,PN115,N 483742.3512,E 561597.8348,EL517.7904,--11
--GT,PN115,SW2283,ST457938000,EW2283,ET457938000
--HSDV:0.006, VSDV:0.009, STATUS:FIXED, SATS:13, AGE:1.0, PDOP:0.929, HDOP:0.500,
VDOP:0.783, TDOP:0.774, GDOP:0.514, NSDV:0.004, ESDV:0.004
--DT10-13-2023
--TM22:12:20
GPS,PN116,LA45.510248871060,LN25.473014948400,EL557.848000,--24
--GS,PN116,N 483745.1700,E 561597.6064,EL517.8913,--24
--GT,PN116,SW2283,ST457967000,EW2283,ET457967000
--HSDV:0.016, VSDV:0.025, STATUS:FIXED, SATS:13, AGE:1.0, PDOP:0.930, HDOP:0.500,
VDOP:0.784, TDOP:0.774, GDOP:0.515, NSDV:0.012, ESDV:0.010
--DT10-13-2023
--TM22:12:49
GPS,PN117,LA45.510249729240,LN25.473022633320,EL557.907000,--3
--GS,PN117,N 483745.4513,E 561599.2614,EL517.9504,--3
--GT,PN117,SW2283,ST457977000,EW2283,ET457977000
--HSDV:0.008, VSDV:0.012, STATUS:FIXED, SATS:13, AGE:1.0, PDOP:0.930, HDOP:0.500,
VDOP:0.784, TDOP:0.774, GDOP:0.515, NSDV:0.006, ESDV:0.005
--DT10-13-2023
--TM22:12:59
GPS,PN118,LA45.510250483800,LN25.473037408980,EL557.901000,--3
--GS,PN118,N 483745.7158,E 561602.4461,EL517.9445,--3
--GT,PN118,SW2283,ST457982000,EW2283,ET457982000
--HSDV:0.008, VSDV:0.013, STATUS:FIXED, SATS:13, AGE:1.0, PDOP:0.931, HDOP:0.500,
VDOP:0.785, TDOP:0.775, GDOP:0.515, NSDV:0.006, ESDV:0.005
--DT10-13-2023
--TM22:13:04
GPS,PN119,LA45.510239547360,LN25.473015909060,EL557.729000,--11
--GS,PN119,N 483742.2942,E 561597.8422,EL517.7724,--11
--GT,PN119,SW2283,ST457993000,EW2283,ET457993000
--HSDV:0.005, VSDV:0.007, STATUS:FIXED, SATS:14, AGE:1.0, PDOP:0.931, HDOP:0.500,
VDOP:0.785, TDOP:0.775, GDOP:0.516, NSDV:0.004, ESDV:0.003
--DT10-13-2023
--TM22:13:15
GPS,PN120,LA45.510231751680,LN25.473017170260,EL557.665000,--24
--GS,PN120,N 483739.8907,E 561598.1381,EL517.7084,--24
--GT,PN120,SW2283,ST458000000,EW2283,ET458000000
--HSDV:0.006, VSDV:0.009, STATUS:FIXED, SATS:14, AGE:1.0, PDOP:0.931, HDOP:0.500,
VDOP:0.785, TDOP:0.775, GDOP:0.516, NSDV:0.004, ESDV:0.004
--DT10-13-2023
--TM22:13:22
GPS,PN121,LA45.510217194120,LN25.473019291380,EL557.706000,--12
--GS,PN121,N 483735.4019,E 561598.6401,EL517.7495,--12
--GT,PN121,SW2283,ST458011000,EW2283,ET458011000
--HSDV:0.005, VSDV:0.008, STATUS:FIXED, SATS:12, AGE:1.0, PDOP:0.931, HDOP:0.500,
VDOP:0.785, TDOP:0.775, GDOP:0.516, NSDV:0.004, ESDV:0.003
--DT10-13-2023
--TM22:13:33
GPS,PN122,LA45.510200525520,LN25.473021917280,EL557.725000,--12
--GS,PN122,N 483730.2626,E 561599.2576,EL517.7687,--12

--GT, PN122, SW2283, ST458020000, EW2283, ET458020000
--HSDV:0.004, VSDV:0.007, STATUS:FIXED, SATS:12, AGE:1.0, PDOP:0.983, HDOP:0.500,
VDOP:0.846, TDOP:0.800, GDOP:0.571, NSDV:0.003, ESDV:0.003
--DT10-13-2023
--TM22:13:42
GPS, PN123, LA45.510192059520, LN25.473023952420, EL557.766000, --24
--GS, PN123, N 483727.6538, E 561599.7225, EL517.8097, --24
--GT, PN123, SW2283, ST458030000, EW2283, ET458030000
--HSDV:0.007, VSDV:0.011, STATUS:FIXED, SATS:14, AGE:1.0, PDOP:0.932, HDOP:0.500,
VDOP:0.786, TDOP:0.776, GDOP:0.516, NSDV:0.006, ESDV:0.004
--DT10-13-2023
--TM22:13:52
GPS, PN124, LA45.510169816680, LN25.473027541440, EL557.643000, --11
--GS, PN124, N 483720.7961, E 561600.5647, EL517.6869, --11
--GT, PN124, SW2283, ST458042000, EW2283, ET458042000
--HSDV:0.007, VSDV:0.012, STATUS:FIXED, SATS:13, AGE:1.0, PDOP:0.932, HDOP:0.500,
VDOP:0.786, TDOP:0.775, GDOP:0.517, NSDV:0.005, ESDV:0.005
--DT10-13-2023
--TM22:14:04
GPS, PN125, LA45.510159207840, LN25.473049474860, EL557.797000, --3
--GS, PN125, N 483717.5685, E 561605.3281, EL517.8412, --3
--GT, PN125, SW2283, ST458049000, EW2283, ET458049000
--HSDV:0.021, VSDV:0.034, STATUS:FIXED, SATS:14, AGE:1.0, PDOP:0.932, HDOP:0.500,
VDOP:0.786, TDOP:0.775, GDOP:0.517, NSDV:0.016, ESDV:0.014
--DT10-13-2023
--TM22:14:11
GPS, PN126, LA45.510158278020, LN25.473034544940, EL557.806000, --3
--GS, PN126, N 483717.2495, E 561602.1106, EL517.8501, --3
--GT, PN126, SW2283, ST458055000, EW2283, ET458055000
--HSDV:0.018, VSDV:0.029, STATUS:FIXED, SATS:14, AGE:1.0, PDOP:0.932, HDOP:0.500,
VDOP:0.786, TDOP:0.775, GDOP:0.517, NSDV:0.014, ESDV:0.012
--DT10-13-2023
--TM22:14:17
GPS, PN127, LA45.510159789720, LN25.473028521000, EL557.671000, --24
--GS, PN127, N 483717.7032, E 561600.8067, EL517.7150, --24
--GT, PN127, SW2283, ST458061000, EW2283, ET458061000
--HSDV:0.012, VSDV:0.020, STATUS:FIXED, SATS:13, AGE:1.0, PDOP:0.932, HDOP:0.500,
VDOP:0.786, TDOP:0.775, GDOP:0.517, NSDV:0.009, ESDV:0.008
--DT10-13-2023
--TM22:14:23
GPS, PN128, LA45.510148920840, LN25.473028871220, EL557.759000, --12
--GS, PN128, N 483714.3492, E 561600.9155, EL517.8031, --12
--GT, PN128, SW2283, ST458072000, EW2283, ET458072000
--HSDV:0.008, VSDV:0.013, STATUS:FIXED, SATS:13, AGE:1.0, PDOP:0.984, HDOP:0.500,
VDOP:0.848, TDOP:0.801, GDOP:0.572, NSDV:0.006, ESDV:0.006
--DT10-13-2023
--TM22:14:34
GPS, PN129, LA45.510128589840, LN25.473030839820, EL557.734000, --12
--GS, PN129, N 483708.0781, E 561601.4023, EL517.7782, --12
--GT, PN129, SW2283, ST458083000, EW2283, ET458083000
--HSDV:0.004, VSDV:0.007, STATUS:FIXED, SATS:13, AGE:1.0, PDOP:0.932, HDOP:0.500,
VDOP:0.787, TDOP:0.775, GDOP:0.518, NSDV:0.003, ESDV:0.003
--DT10-13-2023
--TM22:14:45
GPS, PN130, LA45.510126799500, LN25.473038912700, EL557.768000, --3
--GS, PN130, N 483707.5428, E 561603.1491, EL517.8123, --3
--GT, PN130, SW2283, ST458087000, EW2283, ET458087000
--HSDV:0.006, VSDV:0.009, STATUS:FIXED, SATS:13, AGE:1.0, PDOP:0.932, HDOP:0.500,
VDOP:0.787, TDOP:0.775, GDOP:0.518, NSDV:0.004, ESDV:0.004
--DT10-13-2023
--TM22:14:49
GPS, PN131, LA45.510126271080, LN25.473053419380, EL557.832000, --3
--GS, PN131, N 483707.4107, E 561606.2797, EL517.8764, --3
--GT, PN131, SW2283, ST458092000, EW2283, ET458092000
--HSDV:0.008, VSDV:0.011, STATUS:FIXED, SATS:14, AGE:1.0, PDOP:0.932, HDOP:0.500,
VDOP:0.787, TDOP:0.775, GDOP:0.518, NSDV:0.006, ESDV:0.005
--DT10-13-2023
--TM22:14:54
GPS, PN132, LA45.510114699960, LN25.473032164920, EL557.677000, --12
--GS, PN132, N 483703.7937, E 561601.7307, EL517.7213, --12
--GT, PN132, SW2283, ST458105000, EW2283, ET458105000
--HSDV:0.005, VSDV:0.007, STATUS:FIXED, SATS:14, AGE:1.0, PDOP:0.932, HDOP:0.500,
VDOP:0.787, TDOP:0.775, GDOP:0.518, NSDV:0.004, ESDV:0.003
--DT10-13-2023
--TM22:15:07
GPS, PN133, LA45.510094895940, LN25.473034091460, EL557.660000, --12
--GS, PN133, N 483697.6851, E 561602.2069, EL517.7045, --12
--GT, PN133, SW2283, ST458114000, EW2283, ET458114000
--HSDV:0.004, VSDV:0.007, STATUS:FIXED, SATS:14, AGE:1.0, PDOP:0.945, HDOP:0.500,

VDOP:0.802, TDOP:0.782, GDOP:0.530, NSDV:0.003, ESDV:0.003
--DT10-13-2023
--TM22:15:16
GPS, PN134, LA45.510083837760, LN25.473035336640, EL557.693000, --24
--GS, PN134, N 483694.2746, E 561602.5093, EL517.7375, --24
--GT, PN134, SW2283, ST458126000, EW2283, ET458126000
--HSDV:0.011, VSDV:0.016, STATUS:FIXED, SATS:11, AGE:1.0, PDOP:0.933, HDOP:0.500,
VDOP:0.788, TDOP:0.776, GDOP:0.518, NSDV:0.009, ESDV:0.007
--DT10-13-2023
--TM22:15:28
GPS, PN135, LA45.510067612440, LN25.473035950740, EL558.660000, --11
--GS, PN135, N 483689.2678, E 561602.6914, EL518.7046, --11
--GT, PN135, SW2283, ST458162000, EW2283, ET458162000
--HSDV:0.046, VSDV:0.070, STATUS:FIXED, SATS:11, AGE:1.0, PDOP:1.044, HDOP:0.500,
VDOP:0.916, TDOP:0.845, GDOP:0.612, NSDV:0.037, ESDV:0.027
--DT10-13-2023
--TM22:16:04
GPS, PN136, LA45.510052145580, LN25.473037189200, EL558.140000, --22
--GS, PN136, N 483684.4965, E 561603.0059, EL518.1848, --22
--GT, PN136, SW2283, ST458194000, EW2283, ET458194000
--HSDV:0.004, VSDV:0.007, STATUS:FIXED, SATS:14, AGE:1.0, PDOP:0.934, HDOP:0.500,
VDOP:0.789, TDOP:0.777, GDOP:0.519, NSDV:0.003, ESDV:0.003
--DT10-13-2023
--TM22:16:36
GPS, PN137, LA45.510052176660, LN25.473037251060, EL557.735000, --22
--GS, PN137, N 483684.5062, E 561603.0192, EL517.7798, --22
--GT, PN137, SW2283, ST458202000, EW2283, ET458202000
--HSDV:0.004, VSDV:0.007, STATUS:FIXED, SATS:14, AGE:1.0, PDOP:0.934, HDOP:0.500,
VDOP:0.789, TDOP:0.776, GDOP:0.520, NSDV:0.003, ESDV:0.003
--DT10-13-2023
--TM22:16:44
GPS, PN138, LA45.510045891000, LN25.473037294440, EL557.714000, --13
--GS, PN138, N 483682.5662, E 561603.0478, EL517.7588, --13
--GT, PN138, SW2283, ST458210000, EW2283, ET458210000
--HSDV:0.006, VSDV:0.010, STATUS:FIXED, SATS:13, AGE:1.0, PDOP:0.934, HDOP:0.500,
VDOP:0.789, TDOP:0.776, GDOP:0.520, NSDV:0.005, ESDV:0.004
--DT10-13-2023
--TM22:16:52
GPS, PN139, LA45.510027808980, LN25.473038600580, EL557.791000, --13
--GS, PN139, N 483676.9878, E 561603.3849, EL517.8359, --13
--GT, PN139, SW2283, ST458219000, EW2283, ET458219000
--HSDV:0.005, VSDV:0.007, STATUS:FIXED, SATS:13, AGE:1.0, PDOP:0.934, HDOP:0.500,
VDOP:0.789, TDOP:0.776, GDOP:0.520, NSDV:0.004, ESDV:0.003
--DT10-13-2023
--TM22:17:01
GPS, PN140, LA45.505995142820, LN25.473039483600, EL557.976000, --22
--GS, PN140, N 483666.9070, E 561603.6753, EL518.0211, --22
--GT, PN140, SW2283, ST458231000, EW2283, ET458231000
--HSDV:0.005, VSDV:0.007, STATUS:FIXED, SATS:14, AGE:1.0, PDOP:0.935, HDOP:0.500,
VDOP:0.790, TDOP:0.777, GDOP:0.520, NSDV:0.004, ESDV:0.003
--DT10-13-2023
--TM22:17:13
GPS, PN141, LA45.505994769980, LN25.473046119360, EL557.765000, --3
--GS, PN141, N 483666.8061, E 561605.1078, EL517.8102, --3
--GT, PN141, SW2283, ST458235000, EW2283, ET458235000
--HSDV:0.004, VSDV:0.006, STATUS:FIXED, SATS:14, AGE:1.0, PDOP:0.935, HDOP:0.500,
VDOP:0.790, TDOP:0.777, GDOP:0.520, NSDV:0.003, ESDV:0.003
--DT10-13-2023
--TM22:17:17
GPS, PN142, LA45.505995113480, LN25.473060772440, EL557.855000, --3
--GS, PN142, N 483666.9435, E 561608.2673, EL517.9003, --3
--GT, PN142, SW2283, ST458240000, EW2283, ET458240000
--HSDV:0.006, VSDV:0.011, STATUS:FIXED, SATS:14, AGE:1.0, PDOP:0.935, HDOP:0.500,
VDOP:0.790, TDOP:0.777, GDOP:0.520, NSDV:0.005, ESDV:0.004
--DT10-13-2023
--TM22:17:22
GPS, PN143, LA45.505953839540, LN25.473041211420, EL558.049000, --11
--GS, PN143, N 483654.1620, E 561604.1745, EL518.0944, --11
--GT, PN143, SW2283, ST458262000, EW2283, ET458262000
--HSDV:0.004, VSDV:0.006, STATUS:FIXED, SATS:14, AGE:1.0, PDOP:0.935, HDOP:0.500,
VDOP:0.790, TDOP:0.777, GDOP:0.520, NSDV:0.003, ESDV:0.003
--DT10-13-2023
--TM22:17:44
GPS, PN144, LA45.505929977360, LN25.473042420840, EL558.055000, --22
--GS, PN144, N 483646.7993, E 561604.5084, EL518.1006, --22
--GT, PN144, SW2283, ST458273000, EW2283, ET458273000
--HSDV:0.004, VSDV:0.007, STATUS:FIXED, SATS:14, AGE:1.0, PDOP:0.935, HDOP:0.500,
VDOP:0.790, TDOP:0.777, GDOP:0.520, NSDV:0.003, ESDV:0.003
--DT10-13-2023

--TM22:17:55
GPS,PN145,LA45.505872225680,LN25.473067154100,EL558.120000,--3
--GS,PN145,N 483629.0267,E 561610.0201,EL518.1662,--3
--GT,PN145,SW2283,ST458289000,EW2283,ET458289000
--HSDV:0.005, VSDV:0.007, STATUS:FIXED, SATS:13, AGE:1.0, PDOP:0.963, HDOP:0.500,
VDOP:0.823, TDOP:0.791, GDOP:0.549, NSDV:0.004, ESDV:0.003
--DT10-13-2023
--TM22:18:11
GPS,PN146,LA45.505867893620,LN25.473054459660,EL558.114000,--3
--GS,PN146,N 483627.6624,E 561607.2952,EL518.1601,--3
--GT,PN146,SW2283,ST458294000,EW2283,ET458294000
--HSDV:0.006, VSDV:0.009, STATUS:FIXED, SATS:14, AGE:1.0, PDOP:0.935, HDOP:0.500,
VDOP:0.790, TDOP:0.776, GDOP:0.521, NSDV:0.004, ESDV:0.004
--DT10-13-2023
--TM22:18:16
GPS,PN147,LA45.505850758040,LN25.473051342060,EL558.418000,--3
--GS,PN147,N 483622.3667,E 561606.6752,EL518.4642,--3
--GT,PN147,SW2283,ST458300000,EW2283,ET458300000
--HSDV:0.005, VSDV:0.007, STATUS:FIXED, SATS:14, AGE:1.0, PDOP:0.935, HDOP:0.500,
VDOP:0.790, TDOP:0.776, GDOP:0.521, NSDV:0.004, ESDV:0.003
--DT10-13-2023
--TM22:18:22
GPS,PN148,LA45.505838322860,LN25.473039838320,EL558.763000,--3
--GS,PN148,N 483618.5038,E 561604.2320,EL518.8091,--3
--GT,PN148,SW2283,ST458306000,EW2283,ET458306000
--HSDV:0.005, VSDV:0.008, STATUS:FIXED, SATS:14, AGE:1.0, PDOP:0.936, HDOP:0.500,
VDOP:0.791, TDOP:0.777, GDOP:0.521, NSDV:0.004, ESDV:0.003
--DT10-13-2023
--TM22:18:28
GPS,PN149,LA45.505836290780,LN25.473021990840,EL558.923000,--3
--GS,PN149,N 483617.8384,E 561600.3885,EL518.9690,--3
--GT,PN149,SW2283,ST458311000,EW2283,ET458311000
--HSDV:0.005, VSDV:0.008, STATUS:FIXED, SATS:14, AGE:1.0, PDOP:0.936, HDOP:0.500,
VDOP:0.791, TDOP:0.777, GDOP:0.521, NSDV:0.004, ESDV:0.003
--DT10-13-2023
--TM22:18:33
GPS,PN150,LA45.505837584200,LN25.472988140520,EL559.137000,--3
--GS,PN150,N 483618.1652,E 561593.0832,EL519.1827,--3
--GT,PN150,SW2283,ST458319000,EW2283,ET458319000
--HSDV:0.005, VSDV:0.007, STATUS:FIXED, SATS:14, AGE:1.0, PDOP:0.936, HDOP:0.500,
VDOP:0.791, TDOP:0.777, GDOP:0.521, NSDV:0.004, ESDV:0.003
--DT10-13-2023
--TM22:18:41
GPS,PN151,LA45.505844989820,LN25.472992212000,EL559.150000,--3
--GS,PN151,N 483620.4597,E 561593.9387,EL519.1957,--3
--GT,PN151,SW2283,ST458323000,EW2283,ET458323000
--HSDV:0.006, VSDV:0.009, STATUS:FIXED, SATS:13, AGE:1.0, PDOP:0.936, HDOP:0.500,
VDOP:0.791, TDOP:0.777, GDOP:0.521, NSDV:0.004, ESDV:0.004
--DT10-13-2023
--TM22:18:45
GPS,PN152,LA45.505850419040,LN25.472995103820,EL558.957000,--22
--GS,PN152,N 483622.1417,E 561594.5458,EL519.0027,--22
--GT,PN152,SW2283,ST458330000,EW2283,ET458330000
--HSDV:0.006, VSDV:0.010, STATUS:FIXED, SATS:13, AGE:1.0, PDOP:0.987, HDOP:0.500,
VDOP:0.851, TDOP:0.802, GDOP:0.576, NSDV:0.004, ESDV:0.004
--DT10-13-2023
--TM22:18:52
GPS,PN153,LA45.505840420760,LN25.473018850500,EL558.894000,--22
--GS,PN153,N 483619.1064,E 561599.6985,EL518.9400,--22
--GT,PN153,SW2283,ST458339000,EW2283,ET458339000
--HSDV:0.004, VSDV:0.006, STATUS:FIXED, SATS:13, AGE:1.0, PDOP:0.987, HDOP:0.500,
VDOP:0.851, TDOP:0.802, GDOP:0.576, NSDV:0.003, ESDV:0.003
--DT10-13-2023
--TM22:19:01
--Entered Rover HR: 2.4000 m, Vertical
LS,HR2.4701
GPS,PN154,LA45.505844618300,LN25.473028956000,EL559.053000,--13
--GS,PN154,N 483620.4237,E 561601.8654,EL518.7990,--13
--GT,PN154,SW2283,ST458370000,EW2283,ET458370000
--HSDV:0.004, VSDV:0.006, STATUS:FIXED, SATS:14, AGE:1.0, PDOP:0.936, HDOP:0.500,
VDOP:0.791, TDOP:0.777, GDOP:0.521, NSDV:0.003, ESDV:0.003
--DT10-13-2023
--TM22:19:32
GPS,PN155,LA45.505852100060,LN25.473044782260,EL559.059000,--13
--GS,PN155,N 483622.7669,E 561605.2562,EL518.8051,--13
--GT,PN155,SW2283,ST458384000,EW2283,ET458384000
--HSDV:0.004, VSDV:0.006, STATUS:FIXED, SATS:14, AGE:1.0, PDOP:0.936, HDOP:0.500,
VDOP:0.791, TDOP:0.777, GDOP:0.522, NSDV:0.003, ESDV:0.003
--DT10-13-2023

--TM22:19:46
--Entered Rover HR: 2.0000 m, Vertical
LS,HR2.0701
GPS,PN156,LA45.505841738000,LN25.473065823720,EL558.355000,--3
--GS,PN156,N 483619.6135,E 561609.8265,EL518.5014,--3
--GT,PN156,SW2283,ST458413000,EW2283,ET458413000
--HSDV:0.004, VSDV:0.006, STATUS:FIXED, SATS:14, AGE:1.0, PDOP:0.936, HDOP:0.500,
VDOP:0.791, TDOP:0.777, GDOP:0.522, NSDV:0.003, ESDV:0.003
--DT10-13-2023
--TM22:20:15
GPS,PN157,LA45.505824222380,LN25.473025699080,EL558.925000,--3
--GS,PN157,N 483614.1213,E 561601.2254,EL519.0711,--3
--GT,PN157,SW2283,ST458425000,EW2283,ET458425000
--HSDV:0.006, VSDV:0.009, STATUS:FIXED, SATS:14, AGE:1.0, PDOP:0.936, HDOP:0.500,
VDOP:0.791, TDOP:0.777, GDOP:0.522, NSDV:0.004, ESDV:0.004
--DT10-13-2023
--TM22:20:27
GPS,PN158,LA45.505815116420,LN25.473042045240,EL558.850000,--3
--GS,PN158,N 483611.3457,E 561604.7791,EL518.9963,--3
--GT,PN158,SW2283,ST458430000,EW2283,ET458430000
--HSDV:0.006, VSDV:0.011, STATUS:FIXED, SATS:14, AGE:1.0, PDOP:0.936, HDOP:0.500,
VDOP:0.791, TDOP:0.777, GDOP:0.522, NSDV:0.005, ESDV:0.004
--DT10-13-2023
--TM22:20:32
GPS,PN159,LA45.505794791900,LN25.473059636040,EL558.771000,--3
--GS,PN159,N 483605.1100,E 561608.6356,EL518.9176,--3
--GT,PN159,SW2283,ST458437000,EW2283,ET458437000
--HSDV:0.004, VSDV:0.007, STATUS:FIXED, SATS:14, AGE:1.0, PDOP:0.936, HDOP:0.500,
VDOP:0.791, TDOP:0.777, GDOP:0.522, NSDV:0.003, ESDV:0.003
--DT10-13-2023
--TM22:20:39
GPS,PN160,LA45.505791161600,LN25.473074809140,EL558.787000,--3
--GS,PN160,N 483604.0219,E 561611.9195,EL518.9338,--3
--GT,PN160,SW2283,ST458444000,EW2283,ET458444000
--HSDV:0.004, VSDV:0.006, STATUS:FIXED, SATS:14, AGE:1.0, PDOP:0.936, HDOP:0.500,
VDOP:0.791, TDOP:0.777, GDOP:0.522, NSDV:0.003, ESDV:0.002
--DT10-13-2023
--TM22:20:46
GPS,PN161,LA45.505792713620,LN25.473080335380,EL559.120000,--55
--GS,PN161,N 483604.5128,E 561613.1068,EL519.2668,--55
--GT,PN161,SW2283,ST458463000,EW2283,ET458463000
--HSDV:0.004, VSDV:0.007, STATUS:FIXED, SATS:14, AGE:1.0, PDOP:0.936, HDOP:0.500,
VDOP:0.791, TDOP:0.777, GDOP:0.522, NSDV:0.003, ESDV:0.003
--DT10-13-2023
--TM22:21:05
GPS,PN162,LA45.505796671160,LN25.473103233000,EL558.958000,--55
--GS,PN162,N 483605.7833,E 561618.0336,EL519.1050,--55
--GT,PN162,SW2283,ST458470000,EW2283,ET458470000
--HSDV:0.004, VSDV:0.006, STATUS:FIXED, SATS:14, AGE:1.0, PDOP:0.936, HDOP:0.500,
VDOP:0.791, TDOP:0.777, GDOP:0.522, NSDV:0.003, ESDV:0.003
--DT10-13-2023
--TM22:21:12
GPS,PN163,LA45.505923486980,LN25.473075318780,EL558.771000,--55
--GS,PN163,N 483644.8664,E 561611.6242,EL518.9169,--55
--GT,PN163,SW2283,ST458507000,EW2283,ET458507000
--HSDV:0.006, VSDV:0.009, STATUS:FIXED, SATS:14, AGE:1.0, PDOP:0.936, HDOP:0.500,
VDOP:0.791, TDOP:0.777, GDOP:0.522, NSDV:0.004, ESDV:0.004
--DT10-13-2023
--TM22:21:49
GPS,PN164,LA45.505923124520,LN25.473092757000,EL558.715000,--55
--GS,PN164,N 483644.7919,E 561615.3867,EL518.8611,--55
--GT,PN164,SW2283,ST458513000,EW2283,ET458513000
--HSDV:0.008, VSDV:0.013, STATUS:FIXED, SATS:14, AGE:1.0, PDOP:0.936, HDOP:0.500,
VDOP:0.791, TDOP:0.777, GDOP:0.522, NSDV:0.006, ESDV:0.005
--DT10-13-2023
--TM22:21:55
GPS,PN165,LA45.510071837580,LN25.473069229680,EL558.466000,--55
--GS,PN165,N 483690.6431,E 561609.8566,EL518.6109,--55
--GT,PN165,SW2283,ST458551000,EW2283,ET458551000
--HSDV:0.004, VSDV:0.007, STATUS:FIXED, SATS:11, AGE:1.0, PDOP:0.936, HDOP:0.500,
VDOP:0.791, TDOP:0.777, GDOP:0.522, NSDV:0.003, ESDV:0.003
--DT10-13-2023
--TM22:22:33
GPS,PN166,LA45.510072577320,LN25.473087126420,EL558.345000,--55
--GS,PN166,N 483690.9098,E 561613.7146,EL518.4901,--55
--GT,PN166,SW2283,ST458556000,EW2283,ET458556000
--HSDV:0.007, VSDV:0.012, STATUS:FIXED, SATS:13, AGE:1.0, PDOP:0.936, HDOP:0.500,
VDOP:0.791, TDOP:0.777, GDOP:0.522, NSDV:0.005, ESDV:0.005
--DT10-13-2023

--TM22:22:38
GPS,PN167,LA45.510160432740,LN25.473061715520,EL558.308000,--55
--GS,PN167,N 483717.9727,E 561607.9646,EL518.4523,--55
--GT,PN167,SW2283,ST458578000,EW2283,ET458578000
--HSDV:0.004, VSDV:0.008, STATUS:FIXED, SATS:14, AGE:1.0, PDOP:0.936, HDOP:0.500,
VDOP:0.791, TDOP:0.777, GDOP:0.522, NSDV:0.003, ESDV:0.003
--DT10-13-2023
--TM22:23:00
GPS,PN168,LA45.510161108400,LN25.473082748400,EL557.860000,--55
--GS,PN168,N 483718.2263,E 561612.4992,EL518.0045,--55
--GT,PN168,SW2283,ST458583000,EW2283,ET458583000
--HSDV:0.005, VSDV:0.009, STATUS:FIXED, SATS:14, AGE:1.0, PDOP:0.936, HDOP:0.500,
VDOP:0.791, TDOP:0.777, GDOP:0.522, NSDV:0.004, ESDV:0.003
--DT10-13-2023
--TM22:23:05
GPS,PN169,LA45.510216945000,LN25.473045737400,EL557.708000,--55
--GS,PN169,N 483735.3816,E 561604.3451,EL517.8518,--55
--GT,PN169,SW2283,ST458610000,EW2283,ET458610000
--HSDV:0.004, VSDV:0.007, STATUS:FIXED, SATS:14, AGE:1.0, PDOP:0.936, HDOP:0.500,
VDOP:0.791, TDOP:0.777, GDOP:0.522, NSDV:0.003, ESDV:0.003
--DT10-13-2023
--TM22:23:32
GPS,PN170,LA45.510217481880,LN25.473055030620,EL558.396000,--44
--GS,PN170,N 483735.5672,E 561606.3480,EL518.5399,--44
--GT,PN170,SW2283,ST458616000,EW2283,ET458616000
--HSDV:0.006, VSDV:0.008, STATUS:FIXED, SATS:14, AGE:1.0, PDOP:0.936, HDOP:0.500,
VDOP:0.791, TDOP:0.777, GDOP:0.522, NSDV:0.004, ESDV:0.004
--DT10-13-2023
--TM22:23:38
GPS,PN171,LA45.510221788380,LN25.473073470120,EL558.103000,--44
--GS,PN171,N 483736.9359,E 561610.3121,EL518.2470,--44
--GT,PN171,SW2283,ST458621000,EW2283,ET458621000
--HSDV:0.008, VSDV:0.012, STATUS:FIXED, SATS:14, AGE:1.0, PDOP:0.936, HDOP:0.500,
VDOP:0.791, TDOP:0.777, GDOP:0.522, NSDV:0.006, ESDV:0.005
--DT10-13-2023
--TM22:23:43
GPS,PN172,LA45.510289541820,LN25.473040689420,EL557.940000,--55
--GS,PN172,N 483757.7784,E 561603.0341,EL518.0833,--55
--GT,PN172,SW2283,ST458642000,EW2283,ET458642000
--HSDV:0.007, VSDV:0.013, STATUS:FIXED, SATS:11, AGE:1.0, PDOP:0.941, HDOP:0.500,
VDOP:0.797, TDOP:0.779, GDOP:0.528, NSDV:0.005, ESDV:0.005
--DT10-13-2023
--TM22:24:04
GPS,PN173,LA45.510288405000,LN25.473048825660,EL558.456000,--44
--GS,PN173,N 483757.4450,E 561604.7925,EL518.5993,--44
--GT,PN173,SW2283,ST458647000,EW2283,ET458647000
--HSDV:0.008, VSDV:0.014, STATUS:FIXED, SATS:11, AGE:1.0, PDOP:0.936, HDOP:0.500,
VDOP:0.791, TDOP:0.777, GDOP:0.522, NSDV:0.006, ESDV:0.006
--DT10-13-2023
--TM22:24:09
GPS,PN174,LA45.510287519280,LN25.473066618660,EL558.293000,--44
--GS,PN174,N 483757.2096,E 561608.6330,EL518.4365,--44
--GT,PN174,SW2283,ST458654000,EW2283,ET458654000
--HSDV:0.006, VSDV:0.009, STATUS:FIXED, SATS:12, AGE:1.0, PDOP:0.935, HDOP:0.500,
VDOP:0.790, TDOP:0.776, GDOP:0.522, NSDV:0.004, ESDV:0.004
--DT10-13-2023
--TM22:24:16
GPS,PN175,LA45.510352336440,LN25.473042309300,EL557.956000,--55
--GS,PN175,N 483777.1640,E 561603.1912,EL518.0989,--55
--GT,PN175,SW2283,ST458676000,EW2283,ET458676000
--HSDV:0.013, VSDV:0.022, STATUS:FIXED, SATS:9, AGE:1.0, PDOP:0.935, HDOP:0.500,
VDOP:0.790, TDOP:0.776, GDOP:0.522, NSDV:0.008, ESDV:0.010
--DT10-13-2023
--TM22:24:38
GPS,PN176,LA45.510353311440,LN25.473047821920,EL558.315000,--44
--GS,PN176,N 483777.4768,E 561604.3772,EL518.4579,--44
--GT,PN176,SW2283,ST458680000,EW2283,ET458680000
--HSDV:0.013, VSDV:0.020, STATUS:FIXED, SATS:12, AGE:1.0, PDOP:0.935, HDOP:0.500,
VDOP:0.790, TDOP:0.776, GDOP:0.522, NSDV:0.009, ESDV:0.009
--DT10-13-2023
--TM22:24:42
GPS,PN177,LA45.510359042400,LN25.473059415960,EL558.297000,--44
--GS,PN177,N 483779.2705,E 561606.8604,EL518.4400,--44
--GT,PN177,SW2283,ST458685000,EW2283,ET458685000
--HSDV:0.018, VSDV:0.030, STATUS:FIXED, SATS:10, AGE:1.0, PDOP:0.935, HDOP:0.500,
VDOP:0.790, TDOP:0.776, GDOP:0.522, NSDV:0.012, ESDV:0.013
--DT10-13-2023
--TM22:24:47
GPS,PN178,LA45.510476686260,LN25.473069048180,EL558.722000,--44

--GS,PN178,N 483815.6029,E 561608.5778,EL518.8643,--44
--GT,PN178,SW2283,ST458713000,EW2283,ET458713000
--HSDV:0.004, VSDV:0.007, STATUS:FIXED, SATS:11, AGE:1.0, PDOP:0.935, HDOP:0.500,
VDOP:0.790, TDOP:0.776, GDOP:0.522, NSDV:0.003, ESDV:0.003
--DT10-13-2023
--TM22:25:15
GPS,PN179,LA45.510481445160,LN25.473049496580,EL558.757000,--44
--GS,PN179,N 483817.0300,E 561604.3461,EL518.8991,--44
--GT,PN179,SW2283,ST458718000,EW2283,ET458718000
--HSDV:0.009, VSDV:0.015, STATUS:FIXED, SATS:12, AGE:1.0, PDOP:0.935, HDOP:0.500,
VDOP:0.790, TDOP:0.776, GDOP:0.522, NSDV:0.007, ESDV:0.006
--DT10-13-2023
--TM22:25:20
GPS,PN180,LA45.510481325340,LN25.473040788720,EL558.063000,--55
--GS,PN180,N 483816.9744,E 561602.4683,EL518.2050,--55
--GT,PN180,SW2283,ST458724000,EW2283,ET458724000
--HSDV:0.006, VSDV:0.010, STATUS:FIXED, SATS:11, AGE:1.0, PDOP:0.947, HDOP:0.500,
VDOP:0.804, TDOP:0.783, GDOP:0.533, NSDV:0.004, ESDV:0.004
--DT10-13-2023
--TM22:25:26
GPS,PN181,LA45.510613275060,LN25.473046178580,EL558.017000,--55
--GS,PN181,N 483857.7134,E 561603.2268,EL518.1582,--55
--GT,PN181,SW2283,ST458754000,EW2283,ET458754000
--HSDV:0.006, VSDV:0.010, STATUS:FIXED, SATS:13, AGE:1.0, PDOP:0.934, HDOP:0.500,
VDOP:0.789, TDOP:0.775, GDOP:0.521, NSDV:0.005, ESDV:0.004
--DT10-13-2023
--TM22:25:56
GPS,PN182,LA45.510615250260,LN25.473053535960,EL558.539000,--44
--GS,PN182,N 483858.3388,E 561604.8077,EL518.6803,--44
--GT,PN182,SW2283,ST458759000,EW2283,ET458759000
--HSDV:0.006, VSDV:0.009, STATUS:FIXED, SATS:14, AGE:1.0, PDOP:0.934, HDOP:0.500,
VDOP:0.789, TDOP:0.775, GDOP:0.521, NSDV:0.004, ESDV:0.004
--DT10-13-2023
--TM22:26:01
GPS,PN183,LA45.510616987260,LN25.473074202060,EL558.218000,--44
--GS,PN183,N 483858.9192,E 561609.2598,EL518.3594,--44
--GT,PN183,SW2283,ST458765000,EW2283,ET458765000
--HSDV:0.006, VSDV:0.009, STATUS:FIXED, SATS:12, AGE:1.0, PDOP:0.934, HDOP:0.500,
VDOP:0.789, TDOP:0.775, GDOP:0.521, NSDV:0.004, ESDV:0.004
--DT10-13-2023
--TM22:26:07
GPS,PN184,LA45.510745686480,LN25.473052744740,EL558.199000,--55
--GS,PN184,N 483898.5974,E 561604.2376,EL518.3394,--55
--GT,PN184,SW2283,ST458799000,EW2283,ET458799000
--HSDV:0.005, VSDV:0.009, STATUS:FIXED, SATS:14, AGE:1.0, PDOP:0.941, HDOP:0.500,
VDOP:0.797, TDOP:0.778, GDOP:0.529, NSDV:0.004, ESDV:0.003
--DT10-13-2023
--TM22:26:41
GPS,PN185,LA45.510746735280,LN25.473063995400,EL558.745000,--4
--GS,PN185,N 483898.9452,E 561606.6610,EL518.8855,--4
--GT,PN185,SW2283,ST458804000,EW2283,ET458804000
--HSDV:0.013, VSDV:0.020, STATUS:FIXED, SATS:12, AGE:1.0, PDOP:0.941, HDOP:0.500,
VDOP:0.797, TDOP:0.779, GDOP:0.528, NSDV:0.009, ESDV:0.009
--DT10-13-2023
--TM22:26:46
GPS,PN186,LA45.510744535560,LN25.473081591480,EL558.507000,--4
--GS,PN186,N 483898.3039,E 561610.4630,EL518.6477,--4
--GT,PN186,SW2283,ST458810000,EW2283,ET458810000
--HSDV:0.011, VSDV:0.019, STATUS:FIXED, SATS:12, AGE:1.0, PDOP:0.952, HDOP:0.500,
VDOP:0.810, TDOP:0.785, GDOP:0.539, NSDV:0.007, ESDV:0.008
--DT10-13-2023
--TM22:26:52
GPS,PN187,LA45.510826729680,LN25.473058797360,EL558.566000,--55
--GS,PN187,N 483923.6251,E 561605.2949,EL518.7059,--55
--GT,PN187,SW2283,ST458837000,EW2283,ET458837000
--HSDV:0.006, VSDV:0.009, STATUS:FIXED, SATS:14, AGE:1.0, PDOP:0.933, HDOP:0.500,
VDOP:0.788, TDOP:0.774, GDOP:0.521, NSDV:0.004, ESDV:0.004
--DT10-13-2023
--TM22:27:19
GPS,PN188,LA45.510827112900,LN25.473065770980,EL559.097000,--44
--GS,PN188,N 483923.7583,E 561606.7979,EL519.2370,--44
--GT,PN188,SW2283,ST458842000,EW2283,ET458842000
--HSDV:0.004, VSDV:0.007, STATUS:FIXED, SATS:14, AGE:1.0, PDOP:0.933, HDOP:0.500,
VDOP:0.788, TDOP:0.774, GDOP:0.521, NSDV:0.003, ESDV:0.003
--DT10-13-2023
--TM22:27:24
GPS,PN189,LA45.510825807660,LN25.473081786780,EL558.905000,--44
--GS,PN189,N 483923.3897,E 561610.2563,EL519.0452,--44
--GT,PN189,SW2283,ST458848000,EW2283,ET458848000

--HSDV:0.006, VSDV:0.010, STATUS:FIXED, SATS:12, AGE:1.0, PDOP:0.933, HDOP:0.500,
VDOP:0.788, TDOP:0.774, GDOP:0.521, NSDV:0.005, ESDV:0.004
--DT10-13-2023
--TM22:27:30
GPS, PN190, LA45.510882118860, LN25.473063786600, EL558.766000, --55
--GS, PN190, N 483940.7321, E 561606.2014, EL518.9056, --55
--GT, PN190, SW2283, ST458869000, EW2283, ET458869000
--HSDV:0.008, VSDV:0.014, STATUS:FIXED, SATS:13, AGE:1.0, PDOP:0.973, HDOP:0.500,
VDOP:0.835, TDOP:0.796, GDOP:0.560, NSDV:0.006, ESDV:0.005
--DT10-13-2023
--TM22:27:51
GPS, PN191, LA45.510882313020, LN25.473067523040, EL559.011000, --44
--GS, PN191, N 483940.8001, E 561607.0067, EL519.1507, --44
--GT, PN191, SW2283, ST458873000, EW2283, ET458873000
--HSDV:0.010, VSDV:0.017, STATUS:FIXED, SATS:13, AGE:1.0, PDOP:0.973, HDOP:0.500,
VDOP:0.835, TDOP:0.796, GDOP:0.560, NSDV:0.007, ESDV:0.007
--DT10-13-2023
--TM22:27:55
GPS, PN192, LA45.510879237900, LN25.473080476980, EL559.016000, --44
--GS, PN192, N 483939.8786, E 561609.8102, EL519.1558, --44
--GT, PN192, SW2283, ST458878000, EW2283, ET458878000
--HSDV:0.007, VSDV:0.012, STATUS:FIXED, SATS:13, AGE:1.0, PDOP:0.973, HDOP:0.500,
VDOP:0.835, TDOP:0.796, GDOP:0.560, NSDV:0.005, ESDV:0.005
--DT10-13-2023
--TM22:28:00
GPS, PN193, LA45.510945709920, LN25.473067771860, EL559.321000, --44
--GS, PN193, N 483960.3686, E 561606.8663, EL519.4603, --44
--GT, PN193, SW2283, ST458898000, EW2283, ET458898000
--HSDV:0.015, VSDV:0.026, STATUS:FIXED, SATS:10, AGE:1.0, PDOP:0.973, HDOP:0.500,
VDOP:0.835, TDOP:0.796, GDOP:0.560, NSDV:0.011, ESDV:0.010
--DT10-13-2023
--TM22:28:20
GPS, PN194, LA45.510947116980, LN25.473083097240, EL559.209000, --44
--GS, PN194, N 483960.8357, E 561610.1674, EL519.3484, --44
--GT, PN194, SW2283, ST458903000, EW2283, ET458903000
--HSDV:0.021, VSDV:0.036, STATUS:FIXED, SATS:12, AGE:1.0, PDOP:0.985, HDOP:0.500,
VDOP:0.849, TDOP:0.803, GDOP:0.571, NSDV:0.016, ESDV:0.014
--DT10-13-2023
--TM22:28:25
GPS, PN195, LA45.511057911060, LN25.473071873280, EL558.941000, --44
--GS, PN195, N 483995.0093, E 561607.4073, EL519.0796, --44
--GT, PN195, SW2283, ST458933000, EW2283, ET458933000
--HSDV:0.006, VSDV:0.011, STATUS:FIXED, SATS:10, AGE:1.0, PDOP:0.987, HDOP:0.500,
VDOP:0.851, TDOP:0.804, GDOP:0.573, NSDV:0.005, ESDV:0.004
--DT10-13-2023
--TM22:28:55
GPS, PN196, LA45.511062720120, LN25.473094801380, EL558.951000, --44
--GS, PN196, N 483996.5427, E 561612.3378, EL519.0897, --44
--GT, PN196, SW2283, ST458940000, EW2283, ET458940000
--HSDV:0.006, VSDV:0.011, STATUS:FIXED, SATS:10, AGE:1.0, PDOP:0.987, HDOP:0.500,
VDOP:0.851, TDOP:0.802, GDOP:0.576, NSDV:0.005, ESDV:0.004
--DT10-13-2023
--TM22:29:02
GPS, PN197, LA45.511111429680, LN25.473076187880, EL558.956000, --44
--GS, PN197, N 484011.5376, E 561608.1740, EL519.0942, --44
--GT, PN197, SW2283, ST458957000, EW2283, ET458957000
--HSDV:0.008, VSDV:0.015, STATUS:FIXED, SATS:12, AGE:1.0, PDOP:0.964, HDOP:0.500,
VDOP:0.824, TDOP:0.790, GDOP:0.552, NSDV:0.006, ESDV:0.005
--DT10-13-2023
--TM22:29:19
GPS, PN198, LA45.511111864140, LN25.473074687820, EL558.916000, --55
--GS, PN198, N 484011.6684, E 561607.8492, EL519.0542, --55
--GT, PN198, SW2283, ST458960000, EW2283, ET458960000
--HSDV:0.006, VSDV:0.012, STATUS:FIXED, SATS:12, AGE:1.0, PDOP:0.954, HDOP:0.500,
VDOP:0.812, TDOP:0.785, GDOP:0.541, NSDV:0.005, ESDV:0.004
--DT10-13-2023
--TM22:29:22
GPS, PN199, LA45.511113294360, LN25.473092932440, EL558.964000, --44
--GS, PN199, N 484012.1489, E 561611.7798, EL519.1024, --44
--GT, PN199, SW2283, ST458969000, EW2283, ET458969000
--HSDV:0.006, VSDV:0.011, STATUS:FIXED, SATS:12, AGE:1.0, PDOP:0.954, HDOP:0.500,
VDOP:0.812, TDOP:0.785, GDOP:0.541, NSDV:0.005, ESDV:0.004
--DT10-13-2023
--TM22:29:31
GPS, PN200, LA45.511172106780, LN25.473061638180, EL559.065000, --3
--GS, PN200, N 484030.2350, E 561604.8501, EL519.2027, --3
--GT, PN200, SW2283, ST458995000, EW2283, ET458995000
--HSDV:0.009, VSDV:0.016, STATUS:FIXED, SATS:7, AGE:1.0, PDOP:1.006, HDOP:0.500,
VDOP:0.873, TDOP:0.809, GDOP:0.598, NSDV:0.007, ESDV:0.006

--DT10-13-2023
--TM22:29:57
GPS,PN201,LA45.511174546740,LN25.473075209220,EL558.943000,--3
--GS,PN201,N 484031.0171,E 561607.7697,EL519.0808,--3
--GT,PN201,SW2283,ST458999000,EW2283,ET458999000
--HSDV:0.016, VSDV:0.026, STATUS:FIXED, SATS:7, AGE:1.0, PDOP:0.954, HDOP:0.500,
VDOP:0.812, TDOP:0.785, GDOP:0.542, NSDV:0.010, ESDV:0.012
--DT10-13-2023
--TM22:30:01
GPS,PN202,LA45.511175787300,LN25.473095392200,EL558.959000,--44
--GS,PN202,N 484031.4432,E 561612.1190,EL519.0970,--44
--GT,PN202,SW2283,ST459005000,EW2283,ET459005000
--HSDV:0.066, VSDV:0.099, STATUS:FIXED, SATS:8, AGE:1.0, PDOP:0.966, HDOP:0.500,
VDOP:0.827, TDOP:0.797, GDOP:0.546, NSDV:0.026, ESDV:0.061
--DT10-13-2023
--TM22:30:07
GPS,PN203,LA45.511218658980,LN25.473062087640,EL558.931000,--3
--GS,PN203,N 484044.6047,E 561604.8045,EL519.0684,--3
--GT,PN203,SW2283,ST459022000,EW2283,ET459022000
--HSDV:0.013, VSDV:0.022, STATUS:FIXED, SATS:12, AGE:1.0, PDOP:0.957, HDOP:0.500,
VDOP:0.816, TDOP:0.788, GDOP:0.543, NSDV:0.009, ESDV:0.009
--DT10-13-2023
--TM22:30:24
GPS,PN204,LA45.511221348360,LN25.473076025040,EL558.893000,--3
--GS,PN204,N 484045.4646,E 561607.8023,EL519.0305,--3
--GT,PN204,SW2283,ST459026000,EW2283,ET459026000
--HSDV:0.025, VSDV:0.045, STATUS:FIXED, SATS:11, AGE:1.0, PDOP:0.966, HDOP:0.500,
VDOP:0.826, TDOP:0.792, GDOP:0.552, NSDV:0.019, ESDV:0.016
--DT10-13-2023
--TM22:30:28
GPS,PN205,LA45.511226238240,LN25.473100158360,EL558.819000,--44
--GS,PN205,N 484047.0256,E 561612.9925,EL518.9567,--44
--GT,PN205,SW2283,ST459032000,EW2283,ET459032000
--HSDV:0.018, VSDV:0.032, STATUS:FIXED, SATS:12, AGE:1.0, PDOP:0.957, HDOP:0.500,
VDOP:0.816, TDOP:0.788, GDOP:0.543, NSDV:0.014, ESDV:0.012
--DT10-13-2023
--TM22:30:34
GPS,PN206,LA45.511302636060,LN25.473080362680,EL559.018000,--3
--GS,PN206,N 484070.5641,E 561608.4889,EL519.1550,--3
--GT,PN206,SW2283,ST459054000,EW2283,ET459054000
--HSDV:0.026, VSDV:0.046, STATUS:FIXED, SATS:13, AGE:1.0, PDOP:0.957, HDOP:0.500,
VDOP:0.816, TDOP:0.788, GDOP:0.543, NSDV:0.020, ESDV:0.016
--DT10-13-2023
--TM22:30:56
GPS,PN207,LA45.511298789760,LN25.473094634400,EL558.929000,--3
--GS,PN207,N 484069.4074,E 561611.5788,EL519.0662,--3
--GT,PN207,SW2283,ST459058000,EW2283,ET459058000
--HSDV:0.025, VSDV:0.045, STATUS:FIXED, SATS:13, AGE:1.0, PDOP:0.957, HDOP:0.500,
VDOP:0.816, TDOP:0.788, GDOP:0.543, NSDV:0.019, ESDV:0.016
--DT10-13-2023
--TM22:31:00
GPS,PN208,LA45.511297285800,LN25.473102841500,EL558.815000,--44
--GS,PN208,N 484068.9608,E 561613.3536,EL518.9523,--44
--GT,PN208,SW2283,ST459062000,EW2283,ET459062000
--HSDV:0.011, VSDV:0.019, STATUS:FIXED, SATS:13, AGE:1.0, PDOP:0.957, HDOP:0.500,
VDOP:0.816, TDOP:0.788, GDOP:0.543, NSDV:0.009, ESDV:0.007
--DT10-13-2023
--TM22:31:04
GPS,PN209,LA45.511297406580,LN25.473108703680,EL558.429000,--55
--GS,PN209,N 484069.0106,E 561614.6176,EL518.5663,--55
--GT,PN209,SW2283,ST459067000,EW2283,ET459067000
--HSDV:0.004, VSDV:0.007, STATUS:FIXED, SATS:13, AGE:1.0, PDOP:0.957, HDOP:0.500,
VDOP:0.816, TDOP:0.788, GDOP:0.543, NSDV:0.003, ESDV:0.003
--DT10-13-2023
--TM22:31:09
GPS,PN210,LA45.511296012300,LN25.473108215460,EL558.464000,--42
--GS,PN210,N 484068.5792,E 561614.5165,EL518.6013,--42
--GT,PN210,SW2283,ST459085000,EW2283,ET459085000
--HSDV:0.004, VSDV:0.007, STATUS:FIXED, SATS:13, AGE:1.0, PDOP:0.957, HDOP:0.500,
VDOP:0.816, TDOP:0.788, GDOP:0.543, NSDV:0.003, ESDV:0.003
--DT10-13-2023
--TM22:31:27
GPS,PN211,LA45.511295259180,LN25.473123382680,EL558.443000,--42
--GS,PN211,N 484068.3792,E 561617.7901,EL518.5804,--42
--GT,PN211,SW2283,ST459099000,EW2283,ET459099000
--HSDV:0.005, VSDV:0.008, STATUS:FIXED, SATS:13, AGE:1.0, PDOP:0.957, HDOP:0.500,
VDOP:0.816, TDOP:0.788, GDOP:0.543, NSDV:0.004, ESDV:0.003
--DT10-13-2023
--TM22:31:41

GPS,PN212,LA45.511292697780,LN25.473129249000,EL558.684000,--42
--GS,PN212,N 484067.6012,E 561619.0632,EL518.8215,--42
--GT,PN212,SW2283,ST459104000,EW2283,ET459104000
--HSDV:0.006, VSDV:0.011, STATUS:FIXED, SATS:13, AGE:1.0, PDOP:0.957, HDOP:0.500,
VDOP:0.816, TDOP:0.788, GDOP:0.543, NSDV:0.005, ESDV:0.004
--DT10-13-2023
--TM22:31:46
GPS,PN213,LA45.511297361880,LN25.473133354620,EL559.091000,--24
--GS,PN213,N 484069.0496,E 561619.9345,EL519.2285,--24
--GT,PN213,SW2283,ST459110000,EW2283,ET459110000
--HSDV:0.006, VSDV:0.009, STATUS:FIXED, SATS:13, AGE:1.0, PDOP:0.957, HDOP:0.500,
VDOP:0.816, TDOP:0.788, GDOP:0.543, NSDV:0.004, ESDV:0.004
--DT10-13-2023
--TM22:31:52
--Entered Rover HR: 2.2000 m, Vertical
LS,HR2.2701
GPS,PN214,LA45.511305623820,LN25.473135049920,EL559.261000,--12
--GS,PN214,N 484071.6033,E 561620.2748,EL519.1985,--12
--GT,PN214,SW2283,ST459142000,EW2283,ET459142000
--HSDV:0.004, VSDV:0.007, STATUS:FIXED, SATS:13, AGE:1.0, PDOP:0.957, HDOP:0.500,
VDOP:0.816, TDOP:0.787, GDOP:0.544, NSDV:0.003, ESDV:0.003
--DT10-13-2023
--TM22:32:24
GPS,PN215,LA45.511320015240,LN25.473137544540,EL559.241000,--12
--GS,PN215,N 484076.0507,E 561620.7688,EL519.1784,--12
--GT,PN215,SW2283,ST459151000,EW2283,ET459151000
--HSDV:0.004, VSDV:0.007, STATUS:FIXED, SATS:13, AGE:1.0, PDOP:0.957, HDOP:0.500,
VDOP:0.816, TDOP:0.787, GDOP:0.544, NSDV:0.003, ESDV:0.003
--DT10-13-2023
--TM22:32:33
GPS,PN216,LA45.511441121640,LN25.473158646360,EL560.290000,--67
--GS,PN216,N 484113.4765,E 561624.9491,EL520.2268,--67
--GT,PN216,SW2283,ST459185000,EW2283,ET459185000
--HSDV:0.012, VSDV:0.019, STATUS:FIXED, SATS:11, AGE:1.0, PDOP:0.957, HDOP:0.500,
VDOP:0.816, TDOP:0.787, GDOP:0.544, NSDV:0.007, ESDV:0.010
--DT10-13-2023
--TM22:33:07
GPS,PN217,LA45.511442649180,LN25.473147760440,EL560.236000,--67
--GS,PN217,N 484113.9247,E 561622.5965,EL520.1727,--67
--GT,PN217,SW2283,ST459192000,EW2283,ET459192000
--HSDV:0.044, VSDV:0.080, STATUS:FIXED, SATS:11, AGE:1.0, PDOP:0.967, HDOP:0.500,
VDOP:0.828, TDOP:0.793, GDOP:0.554, NSDV:0.022, ESDV:0.038
--DT10-13-2023
--TM22:33:14
GPS,PN218,LA45.511448511780,LN25.473150041820,EL560.168000,--67
--GS,PN218,N 484115.7391,E 561623.0706,EL520.1047,--67
--GT,PN218,SW2283,ST459201000,EW2283,ET459201000
--HSDV:0.016, VSDV:0.032, STATUS:FIXED, SATS:11, AGE:1.0, PDOP:1.010, HDOP:0.500,
VDOP:0.877, TDOP:0.812, GDOP:0.600, NSDV:0.010, ESDV:0.012
--DT10-13-2023
--TM22:33:23
GPS,PN219,LA45.511454563260,LN25.473123725520,EL559.884000,--80
--GS,PN219,N 484117.5506,E 561617.3762,EL519.8204,--80
--GT,PN219,SW2283,ST459228000,EW2283,ET459228000
--HSDV:0.025, VSDV:0.045, STATUS:FIXED, SATS:10, AGE:1.0, PDOP:0.987, HDOP:0.500,
VDOP:0.851, TDOP:0.804, GDOP:0.573, NSDV:0.019, ESDV:0.016
--DT10-13-2023
--TM22:33:50

JB,NMPARAU,DT03-04-2024,TM09:14:34
MO,ADO,UN1,SF1.00000000,EC0,E00.0,AU0
--SurvCE Version 6.12
--CRD: Alphanumeric
--Projection: ROMANIA/Stereographic 1970 TransDatRo Source Code 1.03
--Equipment: Stonex, S990A, SN:S990312100117, FW:6.0Aa04a,1.13,0.22.211022
--Antenna Type: [STXS900A NONE],RA0.0780m,SHMP0.0547m,L10.0701m,L20.0608m,--
Integrated GPS L1/L2+L2C/L5, GLO L1/L2+L
--Fisierul de localizare: Nici unul
--Fisierul de separare al geoidului: \Program Files\SurvCE\Data\Romanian_ETRS89v103.gsf
N43°23'59.0" E019°55'59.0" N48°31'59.0" E030°04'00.0"
--Grid Adjustment File: Nici unul
--Scara GPS: 1.00000000
--Scale Point not used
--RTK Method: RTCM V2.3, Device: GSM intern, Network: NTRIP Nearest_2.3
BP,PN0_BASE_1,LA45.515908750488,LN25.471778752392,EL580.6182,AG0.0000,PA0.0000,ATAPC,SRRO
VER,--
--Entered Rover HR: 2.0000 m, Vertical
LS,HR2.0701
GPS,PN1,LA45.511282066860,LN25.473130980780,EL558.930000,--31

--GS,PN1,N 484064.3235,E 561619.4693,EL519.0676,--31
--GT,PN1,SW2304,ST112486000,EW2304,ET112486000
--HSDV:0.006, VSDV:0.026, STATUS:FIXED, SATS:13, AGE:1.0, PDOP:1.313, HDOP:0.700,
VDOP:1.111, TDOP:1.114, GDOP:0.695, NSDV:0.005, ESDV:0.004
--DT03-04-2024
--TM09:14:37
GPS,PN2,LA45.511262677740,LN25.473135229140,EL559.223000,--44
--GS,PN2,N 484058.3480,E 561620.4450,EL519.3608,--44
--GT,PN2,SW2304,ST112520000,EW2304,ET112520000
--HSDV:0.013, VSDV:0.040, STATUS:FIXED, SATS:15, AGE:1.0, PDOP:1.315, HDOP:0.700,
VDOP:1.113, TDOP:1.116, GDOP:0.696, NSDV:0.010, ESDV:0.009
--DT03-04-2024
--TM09:15:09
GPS,PN3,LA45.511263137940,LN25.473123309960,EL558.132000,--20
--GS,PN3,N 484058.4645,E 561617.8728,EL518.2697,--20
--GT,PN3,SW2304,ST112532000,EW2304,ET112532000
--HSDV:0.007, VSDV:0.018, STATUS:FIXED, SATS:14, AGE:1.0, PDOP:1.371, HDOP:0.800,
VDOP:1.113, TDOP:1.178, GDOP:0.701, NSDV:0.006, ESDV:0.004
--DT03-04-2024
--TM09:15:21
GPS,PN4,LA45.511272987240,LN25.473124143120,EL558.115000,--20
--GS,PN4,N 484061.5064,E 561618.0224,EL518.2526,--20
--GT,PN4,SW2304,ST112540000,EW2304,ET112540000
--HSDV:0.012, VSDV:0.037, STATUS:FIXED, SATS:13, AGE:2.0, PDOP:1.371, HDOP:0.800,
VDOP:1.114, TDOP:1.179, GDOP:0.701, NSDV:0.009, ESDV:0.008
--DT03-04-2024
--TM09:15:29
GPS,PN5,LA45.511181605200,LN25.473134696100,EL559.211000,--44
--GS,PN5,N 484033.3231,E 561620.5784,EL519.3493,--44
--GT,PN5,SW2304,ST112578000,EW2304,ET112578000
--HSDV:0.006, VSDV:0.015, STATUS:FIXED, SATS:15, AGE:1.0, PDOP:1.480, HDOP:0.800,
VDOP:1.245, TDOP:1.237, GDOP:0.812, NSDV:0.004, ESDV:0.004
--DT03-04-2024
--TM09:16:07
GPS,PN6,LA45.511182478860,LN25.473122178120,EL558.101000,--20
--GS,PN6,N 484033.5660,E 561617.8758,EL518.2392,--20
--GT,PN6,SW2304,ST112587000,EW2304,ET112587000
--HSDV:0.005, VSDV:0.018, STATUS:FIXED, SATS:13, AGE:1.0, PDOP:1.373, HDOP:0.800,
VDOP:1.116, TDOP:1.183, GDOP:0.697, NSDV:0.004, ESDV:0.003
--DT03-04-2024
--TM09:16:16
GPS,PN7,LA45.511181655120,LN25.473156386940,EL559.251000,--44
--GS,PN7,N 484033.3849,E 561625.2565,EL519.3895,--44
--GT,PN7,SW2304,ST112603000,EW2304,ET112603000
--HSDV:0.006, VSDV:0.014, STATUS:FIXED, SATS:17, AGE:1.0, PDOP:1.267, HDOP:0.700,
VDOP:1.056, TDOP:1.091, GDOP:0.644, NSDV:0.004, ESDV:0.004
--DT03-04-2024
--TM09:16:32
GPS,PN8,LA45.511181334840,LN25.473159621180,EL558.903000,--50
--GS,PN8,N 484033.2930,E 561625.9551,EL519.0415,--50
--GT,PN8,SW2304,ST112609000,EW2304,ET112609000
--HSDV:0.005, VSDV:0.013, STATUS:FIXED, SATS:17, AGE:1.0, PDOP:1.267, HDOP:0.700,
VDOP:1.056, TDOP:1.091, GDOP:0.644, NSDV:0.004, ESDV:0.003
--DT03-04-2024
--TM09:16:38
GPS,PN9,LA45.511019320620,LN25.473156568740,EL558.649000,--50
--GS,PN9,N 483983.2793,E 561625.7930,EL518.7885,--50
--GT,PN9,SW2304,ST112656000,EW2304,ET112656000
--HSDV:0.010, VSDV:0.037, STATUS:FIXED, SATS:16, AGE:1.0, PDOP:1.266, HDOP:0.700,
VDOP:1.055, TDOP:1.091, GDOP:0.643, NSDV:0.008, ESDV:0.006
--DT03-04-2024
--TM09:17:25
GPS,PN10,LA45.511018974660,LN25.473148704180,EL559.332000,--44
--GS,PN10,N 483983.1557,E 561624.0978,EL519.4715,--44
--GT,PN10,SW2304,ST112664000,EW2304,ET112664000
--HSDV:0.012, VSDV:0.039, STATUS:FIXED, SATS:17, AGE:1.0, PDOP:1.266, HDOP:0.700,
VDOP:1.055, TDOP:1.091, GDOP:0.643, NSDV:0.010, ESDV:0.007
--DT03-04-2024
--TM09:17:33
GPS,PN11,LA45.511018636920,LN25.473133976580,EL559.270000,--44
--GS,PN11,N 483983.0199,E 561620.9223,EL519.4093,--44
--GT,PN11,SW2304,ST112670000,EW2304,ET112670000
--HSDV:0.011, VSDV:0.034, STATUS:FIXED, SATS:17, AGE:1.0, PDOP:1.266, HDOP:0.700,
VDOP:1.055, TDOP:1.091, GDOP:0.643, NSDV:0.009, ESDV:0.007
--DT03-04-2024
--TM09:17:39
GPS,PN12,LA45.511018148160,LN25.473118541040,EL558.094000,--20
--GS,PN12,N 483982.8360,E 561617.5946,EL518.2332,--20
--GT,PN12,SW2304,ST112680000,EW2304,ET112680000

--HSDV:0.005, VSDV:0.010, STATUS:FIXED, SATS:17, AGE:2.0, PDOP:1.266, HDOP:0.700, VDOP:1.055, TDOP:1.091, GDOP:0.643, NSDV:0.004, ESDV:0.003
--DT03-04-2024
--TM09:17:49
GPS, PN13, LA45.510894150660, LN25.473115218180, EL558.029000, --20
--GS, PN13, N 483944.5559, E 561617.2577, EL518.1690, --20
--GT, PN13, SW2304, ST112719000, EW2304, ET112719000
--HSDV:0.005, VSDV:0.015, STATUS:FIXED, SATS:17, AGE:2.0, PDOP:1.265, HDOP:0.700, VDOP:1.054, TDOP:1.090, GDOP:0.642, NSDV:0.004, ESDV:0.003
--DT03-04-2024
--TM09:18:28
GPS, PN14, LA45.510893945580, LN25.473129529560, EL559.129000, --44
--GS, PN14, N 483944.5233, E 561620.3451, EL519.2691, --44
--GT, PN14, SW2304, ST112727000, EW2304, ET112727000
--HSDV:0.004, VSDV:0.010, STATUS:FIXED, SATS:17, AGE:2.0, PDOP:1.265, HDOP:0.700, VDOP:1.054, TDOP:1.090, GDOP:0.642, NSDV:0.003, ESDV:0.003
--DT03-04-2024
--TM09:18:36
GPS, PN15, LA45.510892226760, LN25.473145219980, EL559.040000, --44
--GS, PN15, N 483944.0263, E 561623.7345, EL519.1803, --44
--GT, PN15, SW2304, ST112733000, EW2304, ET112733000
--HSDV:0.010, VSDV:0.020, STATUS:FIXED, SATS:17, AGE:1.0, PDOP:1.265, HDOP:0.700, VDOP:1.054, TDOP:1.090, GDOP:0.642, NSDV:0.008, ESDV:0.006
--DT03-04-2024
--TM09:18:42
GPS, PN16, LA45.510891720900, LN25.473152386560, EL558.397000, --50
--GS, PN16, N 483943.8855, E 561625.2818, EL518.5373, --50
--GT, PN16, SW2304, ST112740000, EW2304, ET112740000
--HSDV:0.004, VSDV:0.009, STATUS:FIXED, SATS:17, AGE:1.0, PDOP:1.265, HDOP:0.700, VDOP:1.054, TDOP:1.090, GDOP:0.642, NSDV:0.003, ESDV:0.003
--DT03-04-2024
--TM09:18:49
GPS, PN17, LA45.510805609800, LN25.473151616940, EL558.484000, --50
--GS, PN17, N 483917.3049, E 561625.3796, EL518.6249, --50
--GT, PN17, SW2304, ST112771000, EW2304, ET112771000
--HSDV:0.005, VSDV:0.013, STATUS:FIXED, SATS:15, AGE:1.0, PDOP:1.400, HDOP:0.700, VDOP:1.212, TDOP:1.167, GDOP:0.772, NSDV:0.004, ESDV:0.003
--DT03-04-2024
--TM09:19:20
GPS, PN18, LA45.510798209220, LN25.473156834060, EL558.396000, --11
--GS, PN18, N 483915.0318, E 561626.5275, EL518.5370, --11
--GT, PN18, SW2304, ST112789000, EW2304, ET112789000
--HSDV:0.011, VSDV:0.032, STATUS:FIXED, SATS:11, AGE:1.0, PDOP:1.322, HDOP:0.700, VDOP:1.121, TDOP:1.122, GDOP:0.699, NSDV:0.009, ESDV:0.007
--DT03-04-2024
--TM09:19:38
GPS, PN19, LA45.510798751560, LN25.473144908820, EL559.094000, --23
--GS, PN19, N 483915.1737, E 561623.9537, EL519.2349, --23
--GT, PN19, SW2304, ST112808000, EW2304, ET112808000
--HSDV:0.007, VSDV:0.017, STATUS:FIXED, SATS:16, AGE:1.0, PDOP:1.322, HDOP:0.700, VDOP:1.122, TDOP:1.123, GDOP:0.699, NSDV:0.006, ESDV:0.004
--DT03-04-2024
--TM09:19:57
GPS, PN20, LA45.510799225080, LN25.473128977320, EL559.031000, --23
--GS, PN20, N 483915.2857, E 561620.5161, EL519.1717, --23
--GT, PN20, SW2304, ST112819000, EW2304, ET112819000
--HSDV:0.004, VSDV:0.009, STATUS:FIXED, SATS:16, AGE:1.0, PDOP:1.322, HDOP:0.700, VDOP:1.122, TDOP:1.123, GDOP:0.699, NSDV:0.003, ESDV:0.002
--DT03-04-2024
--TM09:20:08
GPS, PN21, LA45.510799915860, LN25.473115064280, EL558.247000, --31
--GS, PN21, N 483915.4692, E 561617.5131, EL518.3876, --31
--GT, PN21, SW2304, ST112837000, EW2304, ET112837000
--HSDV:0.004, VSDV:0.010, STATUS:FIXED, SATS:15, AGE:1.0, PDOP:1.322, HDOP:0.700, VDOP:1.122, TDOP:1.123, GDOP:0.699, NSDV:0.003, ESDV:0.003
--DT03-04-2024
--TM09:20:26
GPS, PN22, LA45.510753533940, LN25.473152264340, EL558.400000, --24
--GS, PN22, N 483901.2326, E 561625.6787, EL518.5412, --24
--GT, PN22, SW2304, ST112866000, EW2304, ET112866000
--HSDV:0.014, VSDV:0.019, STATUS:FIXED, SATS:14, AGE:1.0, PDOP:1.429, HDOP:0.700, VDOP:1.246, TDOP:1.187, GDOP:0.796, NSDV:0.013, ESDV:0.005
--DT03-04-2024
--TM09:20:55
GPS, PN23, LA45.510753242160, LN25.473151306560, EL558.360000, --99
--GS, PN23, N 483901.1405, E 561625.4731, EL518.5012, --99
--GT, PN23, SW2304, ST112872000, EW2304, ET112872000
--HSDV:0.010, VSDV:0.014, STATUS:FIXED, SATS:13, AGE:2.0, PDOP:1.538, HDOP:0.900, VDOP:1.247, TDOP:1.316, GDOP:0.796, NSDV:0.009, ESDV:0.004

--DT03-04-2024
--TM09:21:01
GPS,PN24,LA45.510754584960,LN25.473127832640,EL558.891000,--24
--GS,PN24,N 483901.5047,E 561620.4059,EL519.0320,--24
--GT,PN24,SW2304,ST112884000,EW2304,ET112884000
--HSDV:0.019, VSDV:0.054, STATUS:FIXED, SATS:15, AGE:1.0, PDOP:1.431, HDOP:0.700,
VDOP:1.248, TDOP:1.188, GDOP:0.797, NSDV:0.015, ESDV:0.011
--DT03-04-2024
--TM09:21:13
GPS,PN25,LA45.510760208340,LN25.473112008360,EL557.856000,--31
--GS,PN25,N 483903.2065,E 561616.9756,EL517.9968,--31
--GT,PN25,SW2304,ST112895000,EW2304,ET112895000
--HSDV:0.019, VSDV:0.052, STATUS:FIXED, SATS:15, AGE:1.0, PDOP:1.432, HDOP:0.700,
VDOP:1.249, TDOP:1.189, GDOP:0.797, NSDV:0.015, ESDV:0.011
--DT03-04-2024
--TM09:21:24
GPS,PN26,LA45.510760740420,LN25.473110659980,EL557.960000,--20
--GS,PN26,N 483903.3679,E 561616.6831,EL518.1008,--20
--GT,PN26,SW2304,ST112899000,EW2304,ET112899000
--HSDV:0.008, VSDV:0.021, STATUS:FIXED, SATS:15, AGE:1.0, PDOP:1.432, HDOP:0.700,
VDOP:1.249, TDOP:1.189, GDOP:0.797, NSDV:0.006, ESDV:0.005
--DT03-04-2024
--TM09:21:28
GPS,PN27,LA45.510761330220,LN25.473118024740,EL558.851000,--42
--GS,PN27,N 483903.5657,E 561618.2698,EL518.9919,--42
--GT,PN27,SW2304,ST112909000,EW2304,ET112909000
--HSDV:0.005, VSDV:0.011, STATUS:FIXED, SATS:15, AGE:1.0, PDOP:1.433, HDOP:0.700,
VDOP:1.250, TDOP:1.191, GDOP:0.797, NSDV:0.004, ESDV:0.003
--DT03-04-2024
--TM09:21:38
GPS,PN28,LA45.510769186920,LN25.473118231320,EL558.603000,--42
--GS,PN28,N 483905.9912,E 561618.2903,EL518.7438,--42
--GT,PN28,SW2304,ST112917000,EW2304,ET112917000
--HSDV:0.004, VSDV:0.009, STATUS:FIXED, SATS:15, AGE:1.0, PDOP:1.433, HDOP:0.700,
VDOP:1.250, TDOP:1.191, GDOP:0.797, NSDV:0.003, ESDV:0.002
--DT03-04-2024
--TM09:21:46
GPS,PN29,LA45.510761213760,LN25.473089037780,EL558.602000,--42
--GS,PN29,N 483903.4677,E 561612.0180,EL518.7426,--42
--GT,PN29,SW2304,ST112930000,EW2304,ET112930000
--HSDV:0.005, VSDV:0.012, STATUS:FIXED, SATS:15, AGE:2.0, PDOP:1.434, HDOP:0.700,
VDOP:1.251, TDOP:1.191, GDOP:0.798, NSDV:0.004, ESDV:0.003
--DT03-04-2024
--TM09:21:59
GPS,PN30,LA45.510769017780,LN25.473088673820,EL558.739000,--42
--GS,PN30,N 483905.8757,E 561611.9156,EL518.8796,--42
--GT,PN30,SW2304,ST112941000,EW2304,ET112941000
--HSDV:0.005, VSDV:0.017, STATUS:FIXED, SATS:15, AGE:1.0, PDOP:1.434, HDOP:0.700,
VDOP:1.251, TDOP:1.191, GDOP:0.798, NSDV:0.004, ESDV:0.003
--DT03-04-2024
--TM09:22:10
GPS,PN31,LA45.510760340820,LN25.473095824860,EL557.831000,--20
--GS,PN31,N 483903.2128,E 561613.4846,EL517.9717,--20
--GT,PN31,SW2304,ST112950000,EW2304,ET112950000
--HSDV:0.006, VSDV:0.018, STATUS:FIXED, SATS:13, AGE:1.0, PDOP:1.434, HDOP:0.700,
VDOP:1.252, TDOP:1.191, GDOP:0.799, NSDV:0.005, ESDV:0.004
--DT03-04-2024
--TM09:22:19
GPS,PN32,LA45.510748883520,LN25.473150746220,EL558.341000,--99
--GS,PN32,N 483899.7940,E 561625.3655,EL518.4822,--99
--GT,PN32,SW2304,ST113006000,EW2304,ET113006000
--HSDV:0.038, VSDV:0.091, STATUS:FIXED, SATS:13, AGE:1.0, PDOP:1.693, HDOP:0.800,
VDOP:1.492, TDOP:1.370, GDOP:0.995, NSDV:0.029, ESDV:0.024
--DT03-04-2024
--TM09:23:15
GPS,PN33,LA45.510638881860,LN25.473149770980,EL558.218000,--24
--GS,PN33,N 483865.8389,E 561625.4921,EL518.3600,--24
--GT,PN33,SW2304,ST113049000,EW2304,ET113049000
--HSDV:0.009, VSDV:0.021, STATUS:FIXED, SATS:15, AGE:2.0, PDOP:1.439, HDOP:0.700,
VDOP:1.257, TDOP:1.195, GDOP:0.801, NSDV:0.007, ESDV:0.005
--DT03-04-2024
--TM09:23:58
GPS,PN34,LA45.510638800140,LN25.473143138160,EL558.808000,--44
--GS,PN34,N 483865.7994,E 561624.0618,EL518.9499,--44
--GT,PN34,SW2304,ST113056000,EW2304,ET113056000
--HSDV:0.005, VSDV:0.013, STATUS:FIXED, SATS:15, AGE:1.0, PDOP:1.439, HDOP:0.700,
VDOP:1.257, TDOP:1.195, GDOP:0.801, NSDV:0.004, ESDV:0.003
--DT03-04-2024
--TM09:24:05

GPS,PN35,LA45.510639512100,LN25.473126570000,EL558.618000,--44
--GS,PN35,N 483865.9837,E 561620.4860,EL518.7598,--44
--GT,PN35,SW2304,ST113062000,EW2304,ET113062000
--HSDV:0.005, VSDV:0.010, STATUS:FIXED, SATS:15, AGE:1.0, PDOP:1.439, HDOP:0.700,
VDOP:1.257, TDOP:1.195, GDOP:0.801, NSDV:0.004, ESDV:0.003
--DT03-04-2024
--TM09:24:11
GPS,PN36,LA45.510640189680,LN25.473109490160,EL557.848000,--20
--GS,PN36,N 483866.1563,E 561616.8000,EL517.9896,--20
--GT,PN36,SW2304,ST113070000,EW2304,ET113070000
--HSDV:0.008, VSDV:0.016, STATUS:FIXED, SATS:15, AGE:1.0, PDOP:1.440, HDOP:0.700,
VDOP:1.258, TDOP:1.196, GDOP:0.801, NSDV:0.006, ESDV:0.005
--DT03-04-2024
--TM09:24:19
GPS,PN37,LA45.510539822520,LN25.473143561100,EL558.880000,--11
--GS,PN37,N 483835.2500,E 561624.4561,EL519.0225,--11
--GT,PN37,SW2304,ST113112000,EW2304,ET113112000
--HSDV:0.047, VSDV:0.113, STATUS:FIXED, SATS:14, AGE:2.0, PDOP:1.789, HDOP:0.900,
VDOP:1.546, TDOP:1.526, GDOP:0.934, NSDV:0.031, ESDV:0.035
--DT03-04-2024
--TM09:25:01
GPS,PN38,LA45.510540036120,LN25.473123939900,EL558.795000,--44
--GS,PN38,N 483835.2739,E 561620.2234,EL518.9374,--44
--GT,PN38,SW2304,ST113123000,EW2304,ET113123000
--HSDV:0.031, VSDV:0.109, STATUS:FIXED, SATS:14, AGE:1.0, PDOP:1.702, HDOP:0.900,
VDOP:1.445, TDOP:1.472, GDOP:0.855, NSDV:0.025, ESDV:0.018
--DT03-04-2024
--TM09:25:12
GPS,PN39,LA45.510539985480,LN25.473106451880,EL557.695000,--20
--GS,PN39,N 483835.2209,E 561616.4516,EL517.8372,--20
--GT,PN39,SW2304,ST113130000,EW2304,ET113130000
--HSDV:0.021, VSDV:0.066, STATUS:FIXED, SATS:13, AGE:1.0, PDOP:1.757, HDOP:1.000,
VDOP:1.445, TDOP:1.535, GDOP:0.855, NSDV:0.016, ESDV:0.013
--DT03-04-2024
--TM09:25:19
--Entered Rover HR: 2.2000 m, Vertical
LS,HR2.2701
GPS,PN40,LA45.510488638140,LN25.473141338700,EL558.919000,--24
--GS,PN40,N 483819.4467,E 561624.1336,EL518.8619,--24
--GT,PN40,SW2304,ST113179000,EW2304,ET113179000
--HSDV:0.006, VSDV:0.016, STATUS:FIXED, SATS:15, AGE:2.0, PDOP:1.705, HDOP:0.900,
VDOP:1.448, TDOP:1.475, GDOP:0.855, NSDV:0.005, ESDV:0.004
--DT03-04-2024
--TM09:26:08
GPS,PN41,LA45.510479775480,LN25.473145653420,EL558.759000,--13
--GS,PN41,N 483816.7204,E 561625.0913,EL518.7019,--13
--GT,PN41,SW2304,ST113194000,EW2304,ET113194000
--HSDV:0.024, VSDV:0.070, STATUS:FIXED, SATS:14, AGE:2.0, PDOP:1.706, HDOP:0.900,
VDOP:1.449, TDOP:1.476, GDOP:0.855, NSDV:0.019, ESDV:0.014
--DT03-04-2024
--TM09:26:23
GPS,PN42,LA45.510456678120,LN25.473145956660,EL558.768000,--13
--GS,PN42,N 483809.5919,E 561625.2275,EL518.7111,--13
--GT,PN42,SW2304,ST113204000,EW2304,ET113204000
--HSDV:0.028, VSDV:0.081, STATUS:FIXED, SATS:14, AGE:2.0, PDOP:1.706, HDOP:0.900,
VDOP:1.449, TDOP:1.475, GDOP:0.856, NSDV:0.022, ESDV:0.018
--DT03-04-2024
--TM09:26:33
GPS,PN43,LA45.510450124740,LN25.473141002160,EL559.057000,--24
--GS,PN43,N 483807.5585,E 561624.1789,EL519.0001,--24
--GT,PN43,SW2304,ST113215000,EW2304,ET113215000
--HSDV:0.021, VSDV:0.071, STATUS:FIXED, SATS:15, AGE:1.0, PDOP:1.706, HDOP:0.900,
VDOP:1.449, TDOP:1.475, GDOP:0.856, NSDV:0.016, ESDV:0.014
--DT03-04-2024
--TM09:26:44
GPS,PN44,LA45.510430839000,LN25.473140662680,EL559.028000,--24
--GS,PN44,N 483801.6051,E 561624.1648,EL518.9712,--24
--GT,PN44,SW2304,ST113227000,EW2304,ET113227000
--HSDV:0.028, VSDV:0.081, STATUS:FIXED, SATS:15, AGE:2.0, PDOP:1.707, HDOP:0.900,
VDOP:1.450, TDOP:1.476, GDOP:0.856, NSDV:0.022, ESDV:0.017
--DT03-04-2024
--TM09:26:56
GPS,PN45,LA45.510430815240,LN25.473138760740,EL558.907000,--12
--GS,PN45,N 483801.5936,E 561623.7546,EL518.8502,--12
--GT,PN45,SW2304,ST113234000,EW2304,ET113234000
--HSDV:0.024, VSDV:0.093, STATUS:FIXED, SATS:15, AGE:2.0, PDOP:1.707, HDOP:0.900,
VDOP:1.450, TDOP:1.476, GDOP:0.856, NSDV:0.018, ESDV:0.016
--DT03-04-2024
--TM09:27:03

GPS,PN46,LA45.510431265360,LN25.473118299420,EL558.955000,--12
--GS,PN46,N 483801.6888,E 561619.3399,EL518.8980,--12
--GT,PN46,SW2304,ST113246000,EW2304,ET113246000
--HSDV:0.012, VSDV:0.035, STATUS:FIXED, SATS:15, AGE:1.0, PDOP:1.707, HDOP:0.900,
VDOP:1.450, TDOP:1.476, GDOP:0.856, NSDV:0.010, ESDV:0.007
--DT03-04-2024
--TM09:27:15
GPS,PN47,LA45.510428914140,LN25.473103863180,EL557.790000,--31
--GS,PN47,N 483800.9322,E 561616.2333,EL517.7329,--31
--GT,PN47,SW2304,ST113261000,EW2304,ET113261000
--HSDV:0.008, VSDV:0.020, STATUS:FIXED, SATS:15, AGE:1.0, PDOP:1.709, HDOP:0.900,
VDOP:1.453, TDOP:1.475, GDOP:0.863, NSDV:0.006, ESDV:0.005
--DT03-04-2024
--TM09:27:30
GPS,PN48,LA45.510417153240,LN25.473140256300,EL559.038000,--11
--GS,PN48,N 483797.3799,E 561624.1190,EL518.9813,--11
--GT,PN48,SW2304,ST113289000,EW2304,ET113289000
--HSDV:0.011, VSDV:0.040, STATUS:FIXED, SATS:15, AGE:1.0, PDOP:1.709, HDOP:0.900,
VDOP:1.453, TDOP:1.475, GDOP:0.863, NSDV:0.008, ESDV:0.007
--DT03-04-2024
--TM09:27:58
GPS,PN49,LA45.510378110580,LN25.473138948420,EL558.441000,--23
--GS,PN49,N 483785.3263,E 561623.9565,EL518.3845,--23
--GT,PN49,SW2304,ST113313000,EW2304,ET113313000
--HSDV:0.019, VSDV:0.093, STATUS:FIXED, SATS:15, AGE:1.0, PDOP:1.709, HDOP:0.900,
VDOP:1.453, TDOP:1.475, GDOP:0.863, NSDV:0.016, ESDV:0.011
--DT03-04-2024
--TM09:28:22
GPS,PN50,LA45.510337796160,LN25.473137644380,EL558.148000,--1165
--GS,PN50,N 483772.8801,E 561623.7987,EL518.0918,--1165
--GT,PN50,SW2304,ST113441000,EW2304,ET113441000
--HSDV:0.035, VSDV:0.101, STATUS:FIXED, SATS:6, AGE:1.0, PDOP:1.763, HDOP:1.000,
VDOP:1.452, TDOP:1.540, GDOP:0.859, NSDV:0.030, ESDV:0.018
--DT03-04-2024
--TM09:30:30
GPS,PN51,LA45.510337517280,LN25.473117871860,EL558.721000,--24
--GS,PN51,N 483772.7517,E 561619.5348,EL518.6646,--24
--GT,PN51,SW2304,ST113462000,EW2304,ET113462000
--HSDV:0.013, VSDV:0.045, STATUS:FIXED, SATS:14, AGE:1.0, PDOP:1.708, HDOP:0.900,
VDOP:1.452, TDOP:1.477, GDOP:0.858, NSDV:0.009, ESDV:0.009
--DT03-04-2024
--TM09:30:51
GPS,PN52,LA45.510337124700,LN25.473108235620,EL558.244000,--24
--GS,PN52,N 483772.6099,E 561617.4575,EL518.1875,--24
--GT,PN52,SW2304,ST113470000,EW2304,ET113470000
--HSDV:0.011, VSDV:0.045, STATUS:FIXED, SATS:13, AGE:1.0, PDOP:1.708, HDOP:0.900,
VDOP:1.452, TDOP:1.477, GDOP:0.858, NSDV:0.008, ESDV:0.008
--DT03-04-2024
--TM09:30:59
GPS,PN53,LA45.510333027240,LN25.473103721340,EL558.313000,--42
--GS,PN53,N 483771.3355,E 561616.4964,EL518.2565,--42
--GT,PN53,SW2304,ST113490000,EW2304,ET113490000
--HSDV:0.017, VSDV:0.052, STATUS:FIXED, SATS:15, AGE:1.0, PDOP:1.707, HDOP:0.900,
VDOP:1.451, TDOP:1.477, GDOP:0.857, NSDV:0.013, ESDV:0.011
--DT03-04-2024
--TM09:31:19
GPS,PN54,LA45.510326747400,LN25.473103494300,EL558.292000,--42
--GS,PN54,N 483769.3967,E 561616.4667,EL518.2356,--42
--GT,PN54,SW2304,ST113500000,EW2304,ET113500000
--HSDV:0.006, VSDV:0.017, STATUS:FIXED, SATS:14, AGE:2.0, PDOP:1.762, HDOP:1.000,
VDOP:1.451, TDOP:1.540, GDOP:0.857, NSDV:0.005, ESDV:0.004
--DT03-04-2024
--TM09:31:29
GPS,PN55,LA45.510333333780,LN25.473082735200,EL558.422000,--42
--GS,PN55,N 483771.3852,E 561611.9689,EL518.3653,--42
--GT,PN55,SW2304,ST113518000,EW2304,ET113518000
--HSDV:0.015, VSDV:0.062, STATUS:FIXED, SATS:12, AGE:2.0, PDOP:1.707, HDOP:0.900,
VDOP:1.450, TDOP:1.476, GDOP:0.856, NSDV:0.011, ESDV:0.010
--DT03-04-2024
--TM09:31:47
GPS,PN56,LA45.510279270660,LN25.473130903620,EL558.358000,--31
--GS,PN56,N 483754.8012,E 561622.5240,EL518.3021,--31
--GT,PN56,SW2304,ST113570000,EW2304,ET113570000
--HSDV:0.006, VSDV:0.018, STATUS:FIXED, SATS:15, AGE:2.0, PDOP:1.705, HDOP:0.900,
VDOP:1.448, TDOP:1.476, GDOP:0.854, NSDV:0.005, ESDV:0.003
--DT03-04-2024
--TM09:32:39
GPS,PN57,LA45.510278320320,LN25.473138425640,EL558.163000,--24
--GS,PN57,N 483754.5240,E 561624.1494,EL518.1072,--24

--GT, PN57, SW2304, ST113609000, EW2304, ET113609000
--HSDV:0.009, VSDV:0.019, STATUS:FIXED, SATS:15, AGE:1.0, PDOP:1.703, HDOP:0.900,
VDOP:1.446, TDOP:1.475, GDOP:0.851, NSDV:0.007, ESDV:0.005
--DT03-04-2024
--TM09:33:18
GPS, PN58, LA45.510260161080, LN25.473130640580, EL558.441000, --23
--GS, PN58, N 483748.9023, E 561622.5258, EL518.3852, --23
--GT, PN58, SW2304, ST113625000, EW2304, ET113625000
--HSDV:0.006, VSDV:0.015, STATUS:FIXED, SATS:15, AGE:1.0, PDOP:1.702, HDOP:0.900,
VDOP:1.445, TDOP:1.475, GDOP:0.850, NSDV:0.005, ESDV:0.004
--DT03-04-2024
--TM09:33:34
GPS, PN59, LA45.510259054980, LN25.473117799980, EL558.387000, --44
--GS, PN59, N 483748.5334, E 561619.7596, EL518.3311, --44
--GT, PN59, SW2304, ST113633000, EW2304, ET113633000
--HSDV:0.005, VSDV:0.013, STATUS:FIXED, SATS:15, AGE:2.0, PDOP:1.702, HDOP:0.900,
VDOP:1.445, TDOP:1.475, GDOP:0.850, NSDV:0.004, ESDV:0.003
--DT03-04-2024
--TM09:33:42
GPS, PN60, LA45.510259593300, LN25.473100692420, EL557.418000, --20
--GS, PN60, N 483748.6630, E 561616.0680, EL517.3620, --20
--GT, PN60, SW2304, ST113641000, EW2304, ET113641000
--HSDV:0.010, VSDV:0.021, STATUS:FIXED, SATS:14, AGE:1.0, PDOP:1.702, HDOP:0.900,
VDOP:1.444, TDOP:1.474, GDOP:0.850, NSDV:0.008, ESDV:0.006
--DT03-04-2024
--TM09:33:50
GPS, PN61, LA45.510229395720, LN25.473131119080, EL558.279000, --23
--GS, PN61, N 483739.4073, E 561622.7233, EL518.2234, --23
--GT, PN61, SW2304, ST113662000, EW2304, ET113662000
--HSDV:0.048, VSDV:0.114, STATUS:FIXED, SATS:14, AGE:1.0, PDOP:1.733, HDOP:0.900,
VDOP:1.481, TDOP:1.485, GDOP:0.894, NSDV:0.040, ESDV:0.027
--DT03-04-2024
--TM09:34:11
GPS, PN62, LA45.510143487420, LN25.473111027780, EL557.354000, --20
--GS, PN62, N 483712.8480, E 561618.6528, EL517.2988, --20
--GT, PN62, SW2304, ST113695000, EW2304, ET113695000
--HSDV:0.011, VSDV:0.027, STATUS:FIXED, SATS:15, AGE:1.0, PDOP:1.698, HDOP:0.900,
VDOP:1.440, TDOP:1.472, GDOP:0.846, NSDV:0.009, ESDV:0.006
--DT03-04-2024
--TM09:34:44
GPS, PN63, LA45.510143984520, LN25.473125842680, EL558.192000, --44
--GS, PN63, N 483713.0331, E 561621.8468, EL518.1369, --44
--GT, PN63, SW2304, ST113704000, EW2304, ET113704000
--HSDV:0.010, VSDV:0.025, STATUS:FIXED, SATS:15, AGE:2.0, PDOP:1.697, HDOP:0.900,
VDOP:1.439, TDOP:1.471, GDOP:0.846, NSDV:0.008, ESDV:0.006
--DT03-04-2024
--TM09:34:53
GPS, PN64, LA45.510143977800, LN25.473142653180, EL558.162000, --44
--GS, PN64, N 483713.0670, E 561625.4727, EL518.1071, --44
--GT, PN64, SW2304, ST113711000, EW2304, ET113711000
--HSDV:0.008, VSDV:0.019, STATUS:FIXED, SATS:15, AGE:1.0, PDOP:1.697, HDOP:0.900,
VDOP:1.439, TDOP:1.472, GDOP:0.845, NSDV:0.006, ESDV:0.005
--DT03-04-2024
--TM09:35:00
GPS, PN65, LA45.510144467580, LN25.473150981780, EL557.664000, --50
--GS, PN65, N 483713.2360, E 561627.2677, EL517.6092, --50
--GT, PN65, SW2304, ST113718000, EW2304, ET113718000
--HSDV:0.004, VSDV:0.008, STATUS:FIXED, SATS:15, AGE:1.0, PDOP:1.696, HDOP:0.900,
VDOP:1.438, TDOP:1.471, GDOP:0.845, NSDV:0.003, ESDV:0.002
--DT03-04-2024
--TM09:35:07
GPS, PN66, LA45.510003562860, LN25.473169306440, EL557.784000, --50
--GS, PN66, N 483669.7837, E 561631.6518, EL517.7302, --50
--GT, PN66, SW2304, ST113756000, EW2304, ET113756000
--HSDV:0.004, VSDV:0.008, STATUS:FIXED, SATS:15, AGE:1.0, PDOP:1.694, HDOP:0.900,
VDOP:1.435, TDOP:1.470, GDOP:0.842, NSDV:0.004, ESDV:0.002
--DT03-04-2024
--TM09:35:45
GPS, PN67, LA45.510002853000, LN25.473159647760, EL558.504000, --44
--GS, PN67, N 483669.5440, E 561629.5706, EL518.4501, --44
--GT, PN67, SW2304, ST113763000, EW2304, ET113763000
--HSDV:0.013, VSDV:0.029, STATUS:FIXED, SATS:15, AGE:1.0, PDOP:1.693, HDOP:0.900,
VDOP:1.434, TDOP:1.469, GDOP:0.842, NSDV:0.010, ESDV:0.008
--DT03-04-2024
--TM09:35:52
GPS, PN68, LA45.510001081620, LN25.473143951640, EL558.588000, --44
--GS, PN68, N 483668.9636, E 561626.1905, EL518.5340, --44
--GT, PN68, SW2304, ST113770000, EW2304, ET113770000
--HSDV:0.010, VSDV:0.024, STATUS:FIXED, SATS:15, AGE:2.0, PDOP:1.693, HDOP:0.900,

VDOP:1.434, TDOP:1.469, GDOP:0.841, NSDV:0.008, ESDV:0.006
--DT03-04-2024
--TM09:35:59
GPS, PN69, LA45.510000639240, LN25.473126365580, EL557.352000, --200
--GS, PN69, N 483668.7894, E 561622.3986, EL517.2979, --200
--GT, PN69, SW2304, ST113778000, EW2304, ET113778000
--HSDV:0.004, VSDV:0.009, STATUS:FIXED, SATS:15, AGE:1.0, PDOP:1.692, HDOP:0.900,
VDOP:1.433, TDOP:1.468, GDOP:0.841, NSDV:0.003, ESDV:0.003
--DT03-04-2024
--TM09:36:07
GPS, PN70, LA45.505852220780, LN25.473138158160, EL557.306000, --20
--GS, PN70, N 483623.0040, E 561625.3968, EL517.2529, --20
--GT, PN70, SW2304, ST113845000, EW2304, ET113845000
--HSDV:0.014, VSDV:0.031, STATUS:FIXED, SATS:16, AGE:1.0, PDOP:1.687, HDOP:0.900,
VDOP:1.427, TDOP:1.466, GDOP:0.835, NSDV:0.011, ESDV:0.008
--DT03-04-2024
--TM09:37:14
GPS, PN71, LA45.505855500620, LN25.473155807700, EL558.485000, --44
--GS, PN71, N 483624.0541, E 561629.1937, EL518.4320, --44
--GT, PN71, SW2304, ST113855000, EW2304, ET113855000
--HSDV:0.009, VSDV:0.019, STATUS:FIXED, SATS:16, AGE:1.0, PDOP:1.685, HDOP:0.900,
VDOP:1.425, TDOP:1.464, GDOP:0.835, NSDV:0.007, ESDV:0.005
--DT03-04-2024
--TM09:37:24
GPS, PN72, LA45.505856105000, LN25.473171651060, EL558.545000, --44
--GS, PN72, N 483624.2746, E 561632.6092, EL518.4922, --44
--GT, PN72, SW2304, ST113862000, EW2304, ET113862000
--HSDV:0.004, VSDV:0.007, STATUS:FIXED, SATS:16, AGE:1.0, PDOP:1.685, HDOP:0.900,
VDOP:1.424, TDOP:1.464, GDOP:0.834, NSDV:0.003, ESDV:0.002
--DT03-04-2024
--TM09:37:31
GPS, PN73, LA45.505855794080, LN25.473180816840, EL557.789000, --50
--GS, PN73, N 483624.1982, E 561634.5872, EL517.7363, --50
--GT, PN73, SW2304, ST113868000, EW2304, ET113868000
--HSDV:0.006, VSDV:0.010, STATUS:FIXED, SATS:16, AGE:1.0, PDOP:1.685, HDOP:0.900,
VDOP:1.424, TDOP:1.464, GDOP:0.833, NSDV:0.005, ESDV:0.004
--DT03-04-2024
--TM09:37:37
GPS, PN74, LA45.505763401880, LN25.473187138680, EL558.209000, --50
--GS, PN74, N 483595.6941, E 561636.2338, EL518.1569, --50
--GT, PN74, SW2304, ST113897000, EW2304, ET113897000
--HSDV:0.005, VSDV:0.009, STATUS:FIXED, SATS:16, AGE:1.0, PDOP:1.681, HDOP:0.900,
VDOP:1.420, TDOP:1.461, GDOP:0.831, NSDV:0.004, ESDV:0.003
--DT03-04-2024
--TM09:38:06
GPS, PN75, LA45.505762446740, LN25.473180653220, EL558.785000, --44
--GS, PN75, N 483595.3854, E 561634.8378, EL518.7329, --44
--GT, PN75, SW2304, ST113902000, EW2304, ET113902000
--HSDV:0.011, VSDV:0.025, STATUS:FIXED, SATS:16, AGE:1.0, PDOP:1.681, HDOP:0.900,
VDOP:1.420, TDOP:1.462, GDOP:0.830, NSDV:0.009, ESDV:0.007
--DT03-04-2024
--TM09:38:11
GPS, PN76, LA45.505761301760, LN25.473164382780, EL558.848000, --44
--GS, PN76, N 483594.9971, E 561631.3318, EL518.7957, --44
--GT, PN76, SW2304, ST113908000, EW2304, ET113908000
--HSDV:0.013, VSDV:0.028, STATUS:FIXED, SATS:16, AGE:1.0, PDOP:1.680, HDOP:0.900,
VDOP:1.419, TDOP:1.461, GDOP:0.830, NSDV:0.010, ESDV:0.008
--DT03-04-2024
--TM09:38:17
GPS, PN77, LA45.505760597840, LN25.473146886960, EL557.206000, --20
--GS, PN77, N 483594.7424, E 561627.5602, EL517.1536, --20
--GT, PN77, SW2304, ST113919000, EW2304, ET113919000
--HSDV:0.005, VSDV:0.010, STATUS:FIXED, SATS:16, AGE:2.0, PDOP:1.680, HDOP:0.900,
VDOP:1.418, TDOP:1.461, GDOP:0.829, NSDV:0.004, ESDV:0.003
--DT03-04-2024
--TM09:38:28
GPS, PN78, LA45.505666206800, LN25.473202018800, EL558.631000, --50
--GS, PN78, N 483565.7258, E 561639.7412, EL518.5796, --50
--GT, PN78, SW2304, ST113952000, EW2304, ET113952000
--HSDV:0.005, VSDV:0.009, STATUS:FIXED, SATS:16, AGE:1.0, PDOP:1.676, HDOP:0.900,
VDOP:1.414, TDOP:1.458, GDOP:0.826, NSDV:0.004, ESDV:0.003
--DT03-04-2024
--TM09:39:01
GPS, PN79, LA45.505665027080, LN25.473194342160, EL559.194000, --44
--GS, PN79, N 483565.3452, E 561638.0889, EL519.1426, --44
--GT, PN79, SW2304, ST113958000, EW2304, ET113958000
--HSDV:0.004, VSDV:0.008, STATUS:FIXED, SATS:16, AGE:2.0, PDOP:1.675, HDOP:0.900,
VDOP:1.413, TDOP:1.457, GDOP:0.826, NSDV:0.003, ESDV:0.003
--DT03-04-2024

--TM09:39:07
GPS,PN80,LA45.505663550180,LN25.473179376540,EL559.177000,--44
--GS,PN80,N 483564.8573,E 561634.8654,EL519.1255,--44
--GT,PN80,SW2304,ST113964000,EW2304,ET113964000
--HSDV:0.004, VSDV:0.008, STATUS:FIXED, SATS:16, AGE:1.0, PDOP:1.674, HDOP:0.900,
VDOP:1.412, TDOP:1.457, GDOP:0.825, NSDV:0.003, ESDV:0.003
--DT03-04-2024
--TM09:39:13
GPS,PN81,LA45.505661753900,LN25.473163930920,EL558.094000,--20
--GS,PN81,N 483564.2698,E 561631.5393,EL518.0423,--20
--GT,PN81,SW2304,ST113973000,EW2304,ET113973000
--HSDV:0.013, VSDV:0.034, STATUS:FIXED, SATS:15, AGE:1.0, PDOP:1.674, HDOP:0.900,
VDOP:1.411, TDOP:1.457, GDOP:0.824, NSDV:0.010, ESDV:0.009
--DT03-04-2024
--TM09:39:22

Semnătura și ștampila
S.C. EURO-TOPO S.R.L. seria RO-B-J nr.2113
ing. Jakab Sándor seria RO-CV-F nr.0001

JAKAB Semnat digital de
SANDOR JAKAB SANDOR
Data: 2024.04.08
13:35:49 +03'00'

**SUPRAFAȚA CANALUL ȘI DIGUL DE APĂRARE SITUAT ÎN
ÎN INTR.LOC.SFÂNTU GHEORGHE, JUD.COVASNA**

Nr. Pct.	Coordonate pct.de contur		Lungimi laturi D(i,i+1)
	X [m]	Y [m]	
1	484068.961	561613.354	1.265
2	484069.011	561614.618	3.234
3	484068.379	561617.790	1.492
4	484067.601	561619.063	1.697
5	484069.053	561619.941	4.825
6	484064.247	561619.514	54.454
7	484010.251	561626.560	33.200
8	483977.051	561626.400	17.790
9	483959.264	561626.091	10.230
10	483949.036	561625.913	2.506
11	483946.530	561625.870	31.483
12	483915.084	561624.346	1.125
13	483915.012	561625.469	48.084
14	483866.931	561624.932	10.129
15	483856.803	561624.819	22.790
16	483834.014	561624.565	14.573
17	483819.447	561624.134	11.889
18	483807.558	561624.179	10.178
19	483797.380	561624.119	24.402
20	483772.980	561623.800	0.785
21	483773.041	561623.017	7.782
22	483765.280	561623.583	20.762
23	483744.573	561625.094	47.177
24	483697.644	561629.921	2.518
25	483695.136	561630.145	10.639
26	483684.539	561631.091	30.906

27	483653.756	561633.840	23.215
28	483630.563	561634.854	2.957
29	483627.609	561634.983	1.751
30	483628.913	561633.815	2.360
31	483630.536	561632.102	2.360
32	483632.013	561630.261	2.360
33	483633.335	561628.306	2.360
34	483634.493	561626.250	2.359
35	483635.478	561624.106	2.361
36	483636.286	561621.888	2.360
37	483636.909	561619.612	2.360
38	483637.344	561617.292	2.360
39	483637.588	561614.945	2.360
40	483637.640	561612.586	0.696
41	483637.598	561611.891	7.273
42	483644.866	561611.624	45.811
43	483690.643	561609.857	27.395
44	483717.973	561607.965	17.668
45	483735.567	561606.348	21.933
46	483757.445	561604.792	20.036
47	483777.477	561604.377	39.553
48	483817.030	561604.346	41.312
49	483858.339	561604.808	40.648
50	483898.945	561606.661	24.813
51	483923.758	561606.798	17.043
52	483940.800	561607.007	19.570
53	483960.369	561606.866	51.186
54	484011.538	561608.174	57.656
S=8113.10mp			

Executant
S.C. EURO-TOPO S.R.L. seria RO-B-J nr.2113
ing.Jakab Sándor seria RO-CV-F nr.0001

**JAKAB
SANDOR**

Semnat digital de
JAKAB SANDOR
Data: 2024.04.08
13:36:02 +03'00'

Se solicită rectificarea suprafeței a parcelei cu nr. top 781/2/1/1/2 de la 34 mp la 348 mp conform identificării pe schița C.F. și PAD-urile vecinilor conform cărora s-a constatat că suprafața rămasă în cartea funciară-veche este mai mică decât suprafața determinată în baza măsurătorilor topografice și a determinării pe cale analitică.

TABEL DE DEZMEMBRARE-SFÂNTU GHEORGHE

SITUATIA VECHЕ			SITUATIA NOUA			
C.F.	NR. TOP	SUPR.	PARC.	NR.TOP NOU	SUPR.	DESTINATIA
43739	782/2/2/3/2/2/2	231		782/2/2/3/2/2/2	231	mun.Sfântu Gheorghe
43740	781/2/1/1/2	34		781/2/1/1/2	348	
43742	781/1/1/2/3	440		781/1/1/2/3	440	
43744	780/1/3	503		780/1/3	503	
43746	779/1/3	491		779/1/3	491	
43748	778/1/3	396		778/1/3	396	
43749	777/2	4386	1	777/2/1	452	
			2	777/2/2	3934	
43750	776/2	3284	1	776/2/1	342	mun.Sfântu Gheorghe
			2	776/2/2	2942	situație juridică neschimbată
43751	775/2/2	2564	1	775/2/2/1	335	mun.Sfântu Gheorghe
			2	775/2/2/2	2229	situație juridică neschimbată
43753	773/2/4/3	150		773/2/4/3	150	mun.Sfântu Gheorghe
43755	772/1/1/3	3231	1	772/1/1/3/1	885	situație juridică neschimbată
			2	772/1/1/3/2	2346	
43756	771/1/2	309		771/1/2	309	mun.Sfântu Gheorghe
43758	771/3/3	3287	1	771/3/3/1	388	
			2	771/3/3/2	2899	situație juridică neschimbată
43759	770/2	2322	1	770/2/1	303	mun.Sfântu Gheorghe
			2	770/2/2	2019	situație juridică neschimbată
43760	769/2	2290	1	769/2/1	363	mun.Sfântu Gheorghe
			2	769/2/2	1927	situație juridică neschimbată
43762	768/2	2099	1	768/2/1	295	mun.Sfântu Gheorghe
			2	768/2/2	1804	situație juridică neschimbată
43763	767/2	1853	1	767/2/1	332	mun.Sfântu Gheorghe
			2	767/2/2	1521	situație juridică neschimbată
43764	766/2	1657	1	766/2/1	367	mun.Sfântu Gheorghe
			2	766/2/2	1290	situație juridică neschimbată
43765	765/2	1350	1	765/2/1	347	mun.Sfântu Gheorghe
			2	765/2/2	1003	situație juridică neschimbată
43766	764/2	1032	1	764/2/1	836	mun.Sfântu Gheorghe
			2	764/2/2	196	situație juridică neschimbată

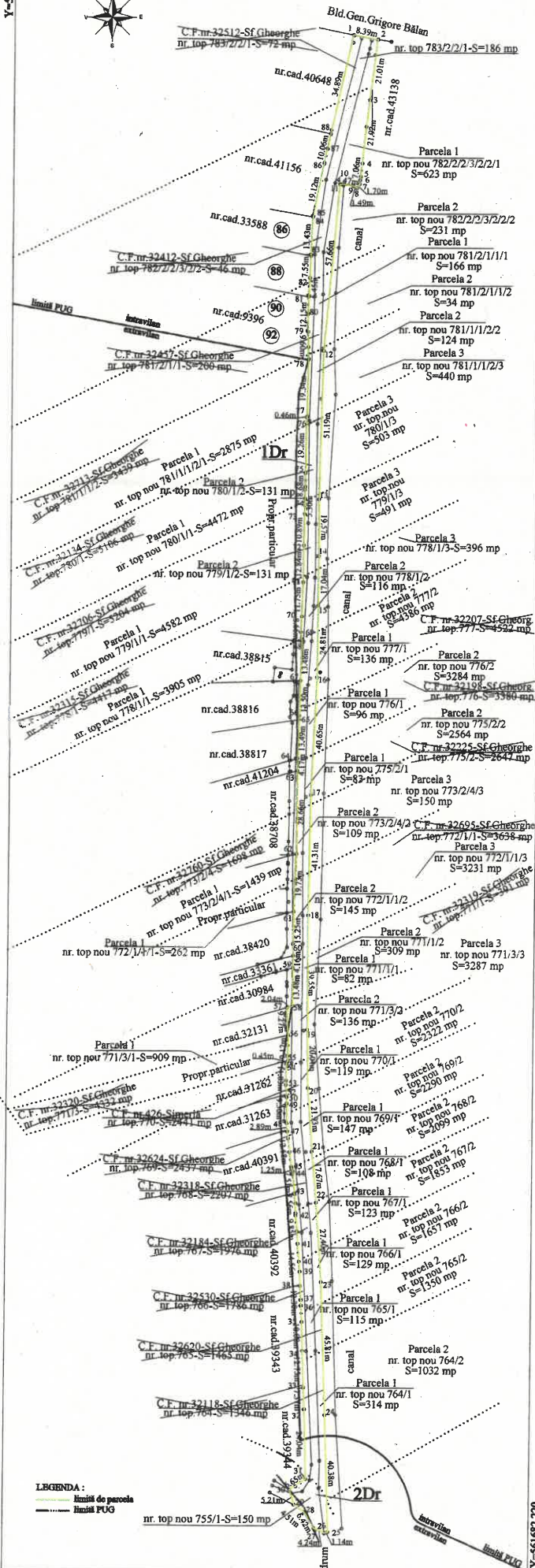
NOTA:

Parcelele cu nr.top 783/2/2/3/2/2/2-S=231 mp, nr.top 781/2/1/1/2-S=348 mp, nr.top 781/1/1/2/3-S=440 mp, nr.top 780/1/3-S=503 mp, nr.top 779/1/3-S=491 mp, nr.top 778/1/3-S=396 mp, nr.top nou 777/2/1-S=452 mp, nr.top nou 776/2/1-S=342 mp, nr.top nou 775/2/2/1-S=335 mp, nr.top 773/2/4/3-S=150 mp, nr.top nou 772/1/1/3/1-S=885 mp, nr.top 771/1/2-S=309 mp, nr.top nou 771/3/3/1-S=388 mp, nr.top nou 770/2/1-S=303 mp, nr.top nou 769/2/1-S=363 mp, nr.top nou 768/2/1-S=295 mp, nr.top nou 767/2/1-S=332 mp, nr.top nou 766/2/1-S=367 mp, nr.top nou 765/2/1-S=347 mp, nr.top nou 764/2/1-S=836 mp sunt identice cu canalul, digul și fâneața care se propune în scopul înscrierii în domeniul public al mun.Sfântu Gheorghe.

Data: Aprilie 2024

Executant
S.C. EURO-TOPO S.R.L. seria RO-B-J nr.2113
ing.Jakab Sándor seria RO-CV-F nr.0001

JAKAB SANDOR Semnat digital de JAKAB SANDOR
 Data: 2024.04.08 13:36:14 +03'00'



PLAN DE AMPLASAMENT ȘI DELIMITARE AL IMOBILULUI

Scara 1:1000

Nr. cadastral	Nr. top	Suprafata măsurată a imobilului (mp)	Adresa imobilului
4372a	783/2/1, 783/2/3/2/1, 781/2/1/1, 781/1/2/2, 780/1/2, 779/1/2, 778/2/2, 775/2/4/2, 772/1/2, 771/1/1, 768/1, 767/1, 765/1, 764/1, 753/1	3469 mp	intr.-extr.Loc.Sfântu Gheorghe, str.Syvester Lajos, jud.Covasa.

Nr.Cartea Funciari		Unitates Administrativ Teritoriale (UAT)	
		Sfântu Gheorghe	

A. Date referitoare la teren			
Nr. parcelă	Categorie de folosință	Suprafata (mp)	Mențiuni
1	drum-intravilan	3201	
2	drum-extravilan	268	imobil împărțit parțial între po.30-48, 49-55, 69-1
Total		3469	

B. Date referitoare la construcții			
Cod constr.	Destinația	Suprafata cuprinsă la sol (mp)	Mențiuni
Total			

Suprafata totala măsurată a imobilului = 3469 mp
Suprafata din act = 3469 mp

Excepționat
S.C. EURO-TOPO S.R.L. - acta PO-B-J nr.2113
Ing. Jakob Sandor acta NO-CV-F nr.001
Conținutul prezentei descrieri a terenului, corectitudinea hotească, documentației cadastrale și corectitudinea acesteia cu realitatea din teren

JAKAB SANDOR Semnat digital de JAKAB SANDOR
Data: 2024.04.02
14:22:55 +03'00'

Alina-Ioana Stanescu Digitally signed by Alina-Ioana Stanescu
Date: 2024.04.03 14:35:16 +03'00'